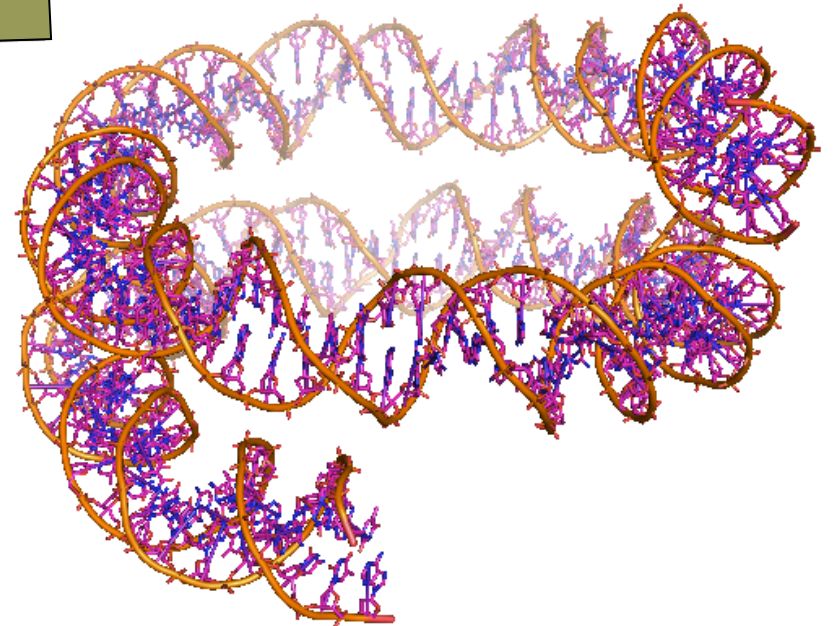
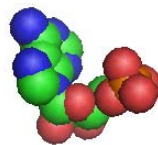
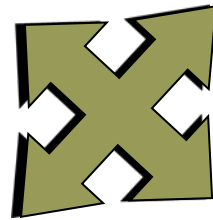
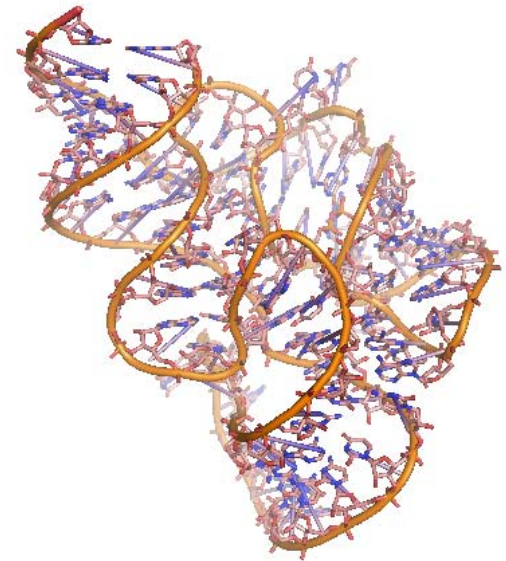
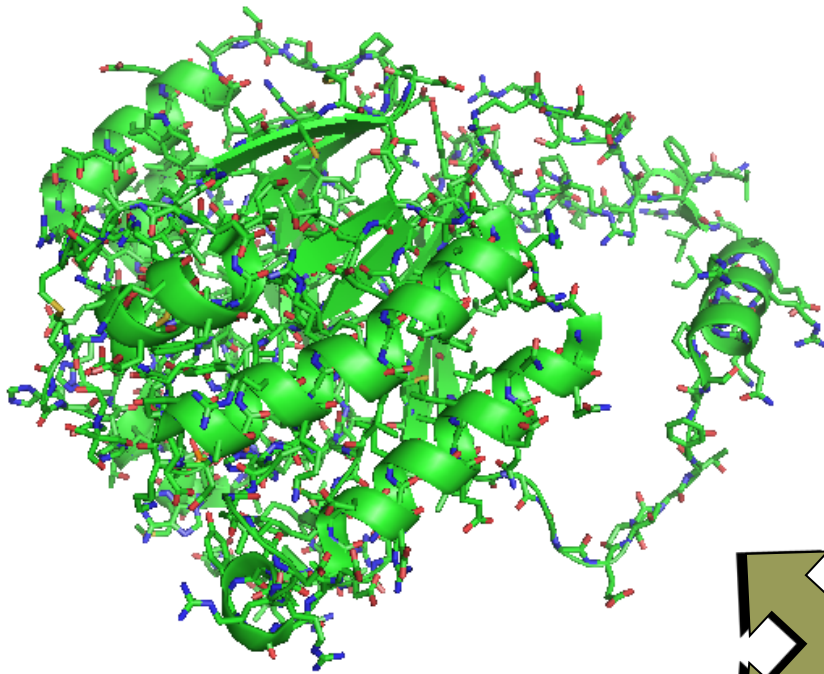


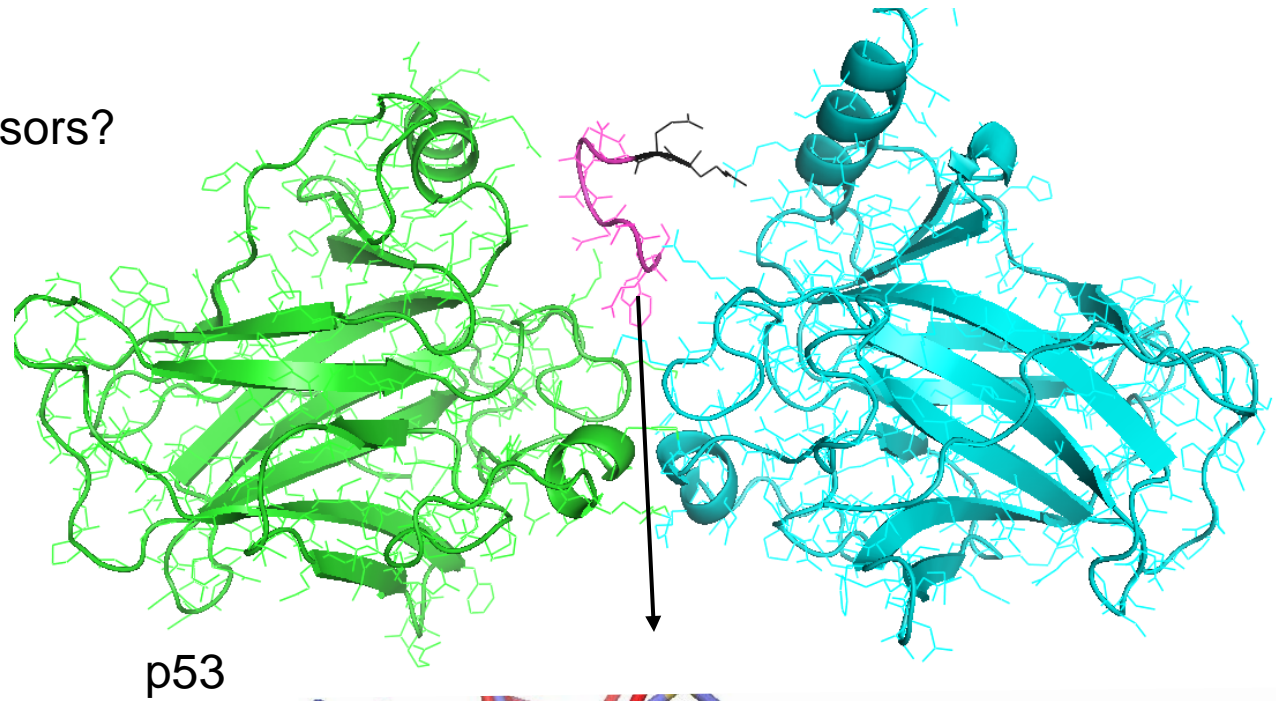
A Portrait of the Peptoid Folding Landscape: A Step Towards the Rational Design of Peptidomimetics

QuickTime™ and a
TIFF (Uncompressed) decompressor
are needed to see this picture.

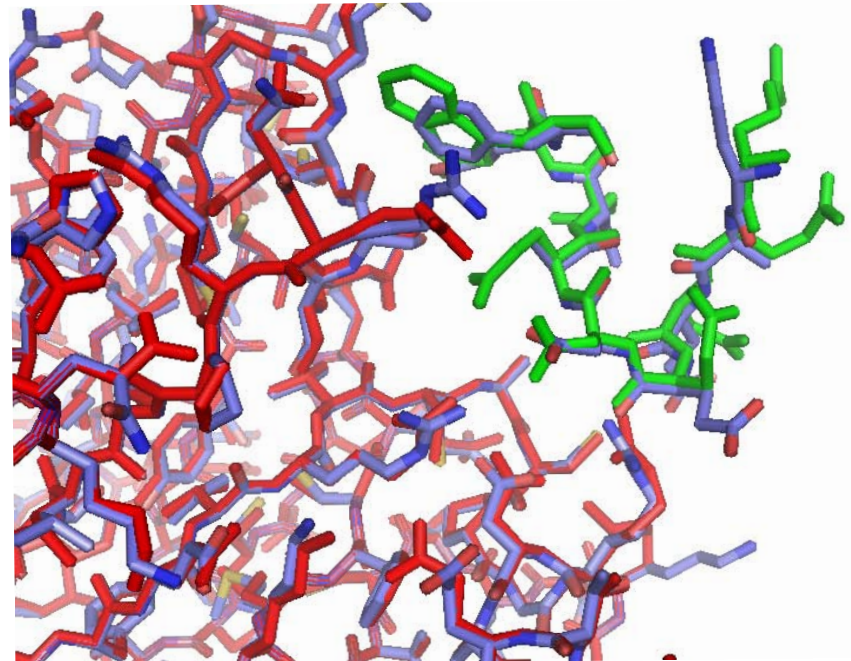
Glenn Butterfoss
New York University



Protein Design for Therapeutics or Biosensors?



p53



Therapeutic and biosensor molecules

Peptides

Advantages:

polymers
(easy to sample/screen)

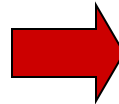
“right size”

Challenges:

degradation

alphabet size

...



Peptidomimetics

Short peptide-like molecules

Advantages:

polymers
(easy to sample/screen)

“right size”

protease resistant (?)

more customizable (?)

Therapeutic and biosensor molecules

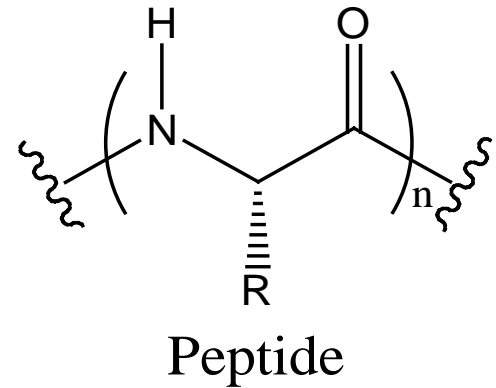
Peptidomimetics

Some common classes:

D-amino acids

β amino acids (extra main chain carbon)

Peptoids



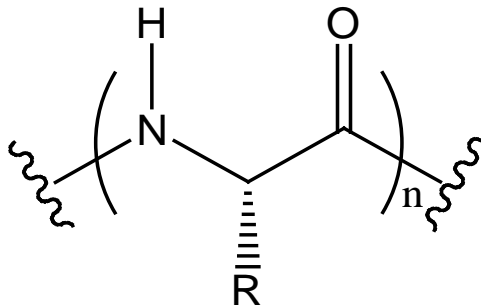
Peptoids

N-substituted glycine oligomers

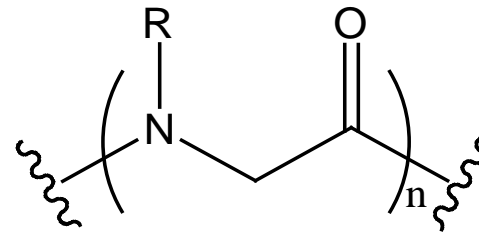
Side chain on the nitrogen

Achiral backbone

No internal backbone hydrogen-bonding



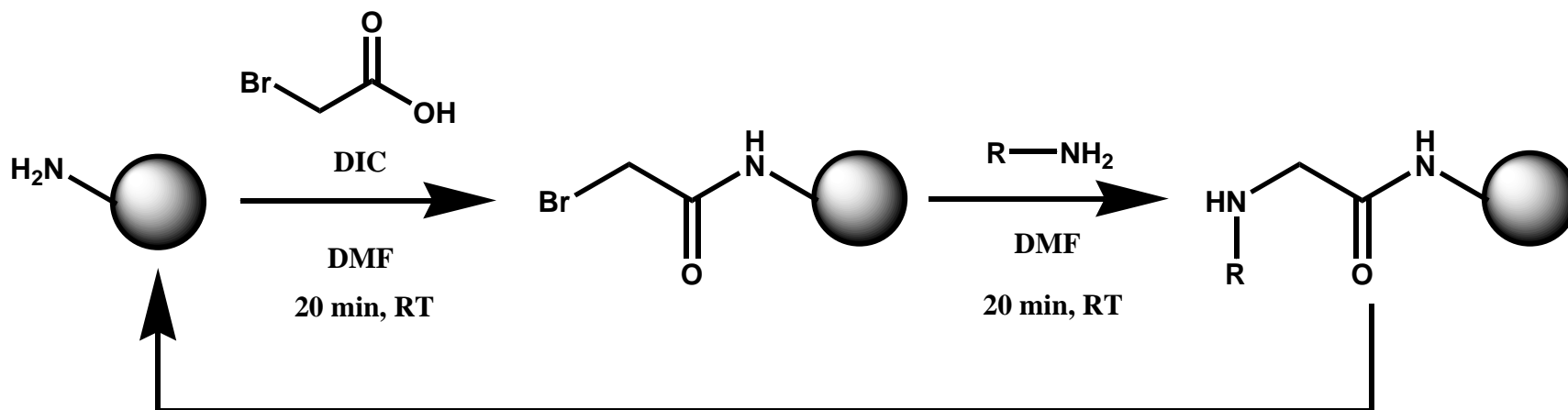
Peptide



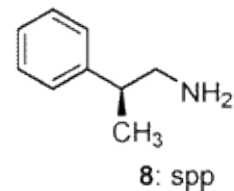
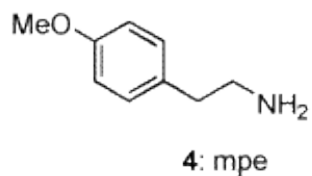
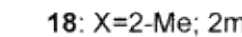
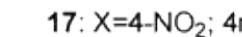
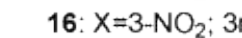
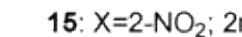
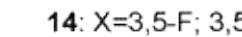
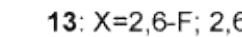
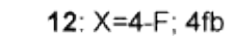
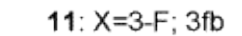
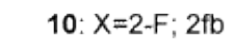
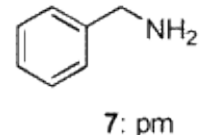
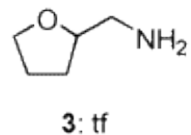
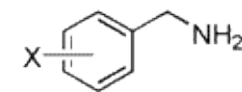
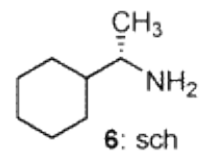
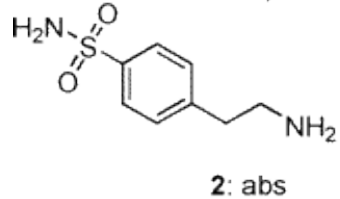
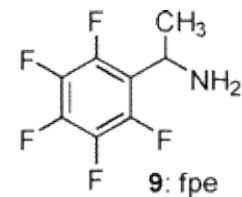
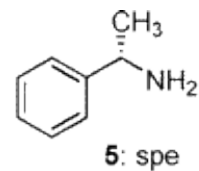
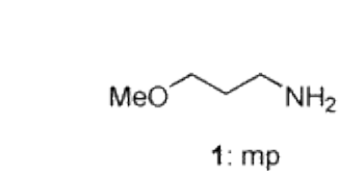
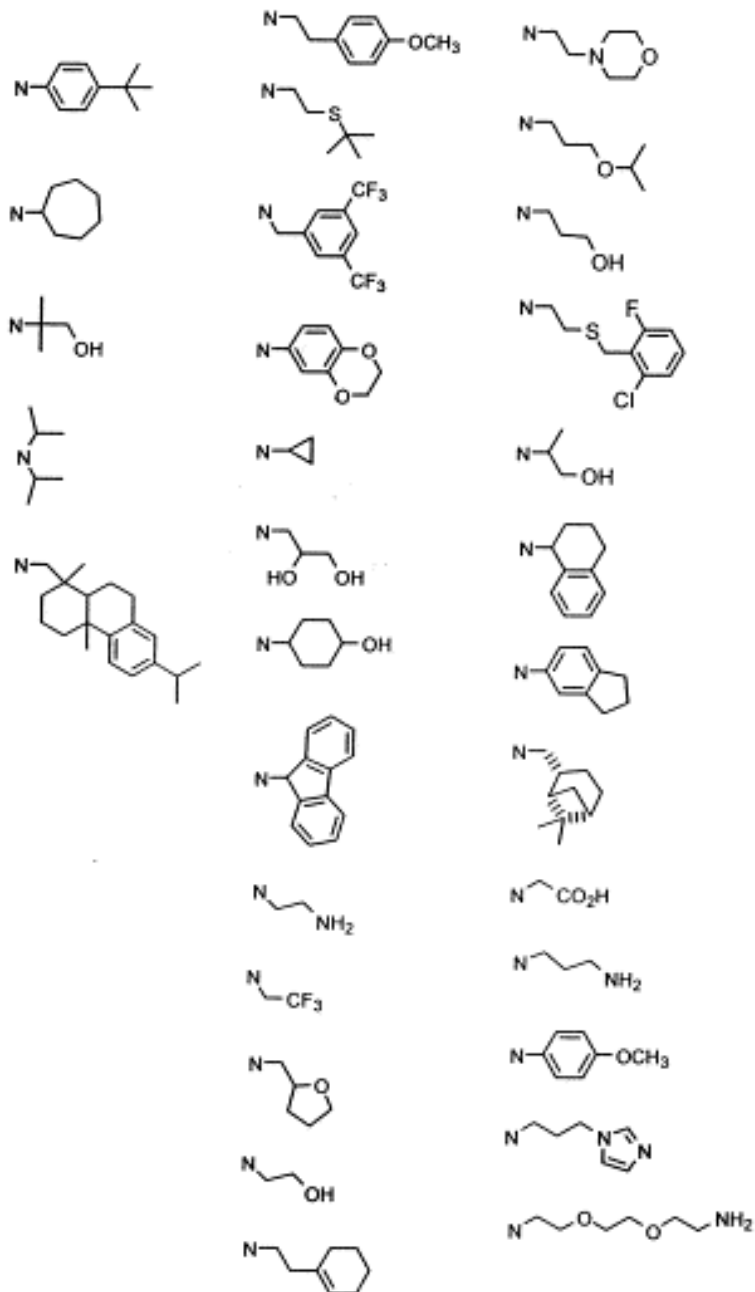
Peptoid

Peptoids:

submonomer synthesis: very high chemical diversity



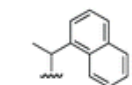
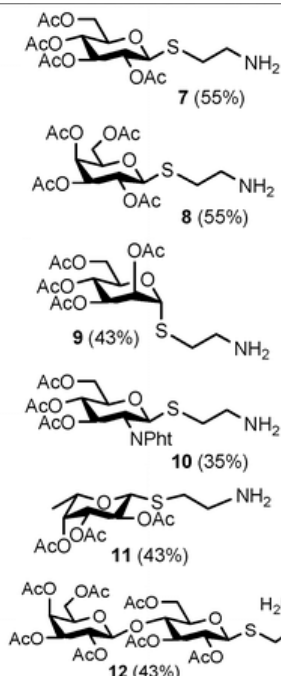
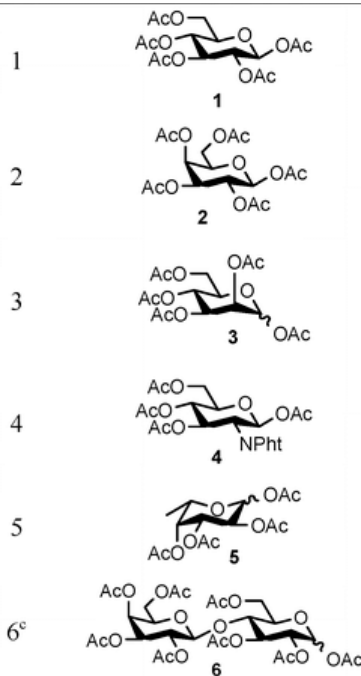
Peptoids:



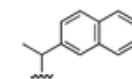
Ng, S.; Goodson, B.; Ehrhardt, A.; Moos, W. H.; Siani, M.; Winter, J. *Bioorganic & Medicinal Chemistry* **1999**, *7*, 1781-1785.

Gorske, B. C.; Jewell, S. A.; Guerard, E. J.; Blackwell, H. E. *Organic Letters* **2005**, *7*, 1521-1524.

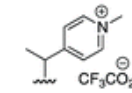
Peptoids:



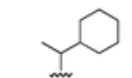
1npe



2npe



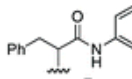
4mpy



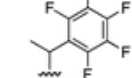
ch



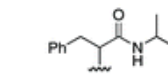
Et



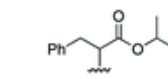
fan



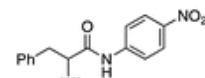
fe



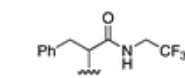
fipa



fipe



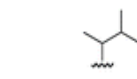
fpan



ffea



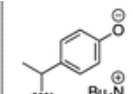
ip



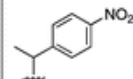
ipe



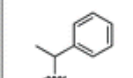
Me



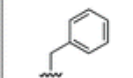
mph



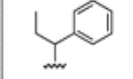
np



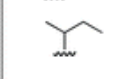
pe



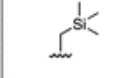
pm



lpp



sb



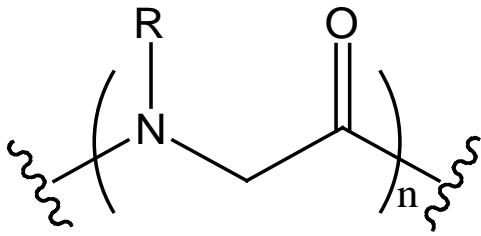
tmsm

Nguyen, J. T.; Porter, M.; Amoui, M.; Miller, W. T.; Zuckermann, R. N.; Lim, W. A. *Chemistry & Biology* **2000**, *7*, 463-473.

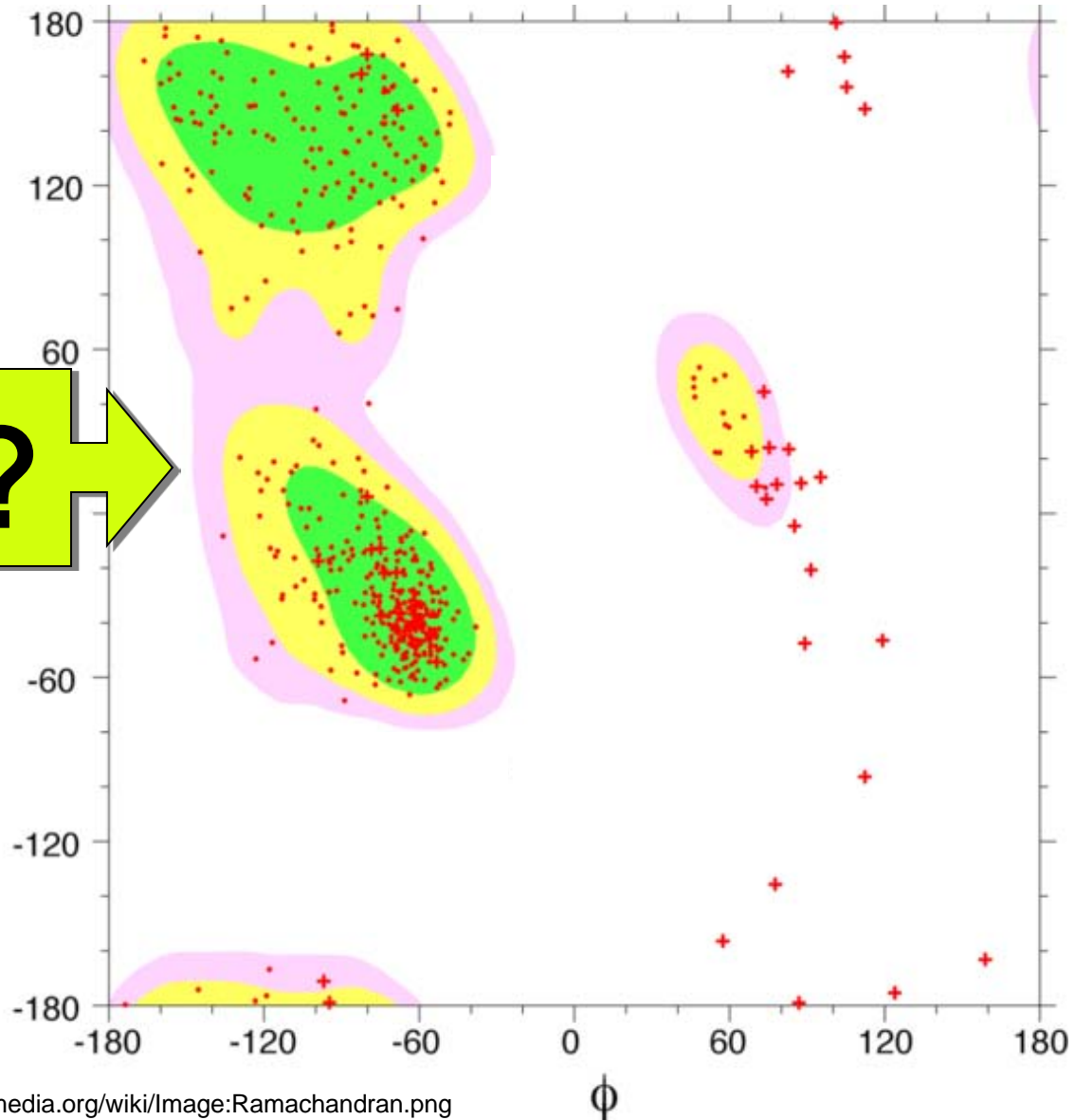
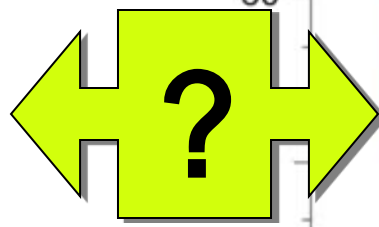
Comegna, D.; De Riccardis, F. *Organic Letters* **2009**, *11*, 3898-3901.

Gorske, B. C.; Stringer, J. R.; Bastian, B. L.; Fowler, S. A.; Blackwell, H. E. *Journal of the American Chemical Society* **2009**, *131*, 16555-16567.

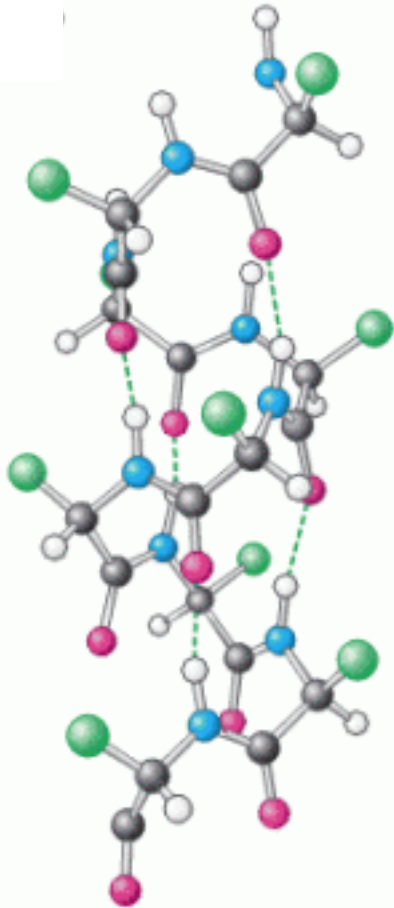
Peptoids: designable foldamers?



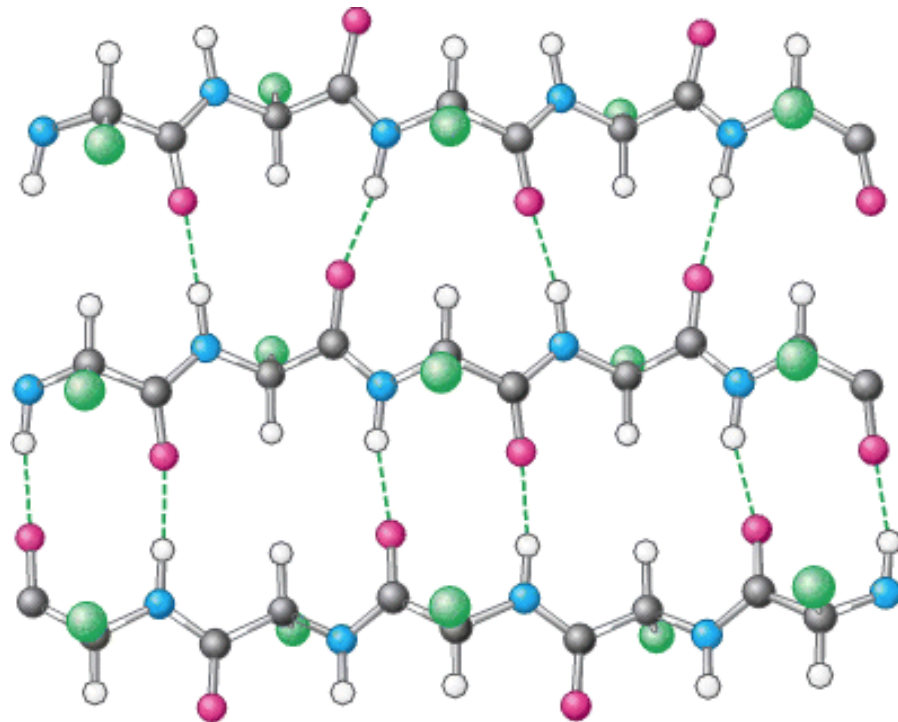
Peptoid



Peptoids: no backbone H-bond donors:



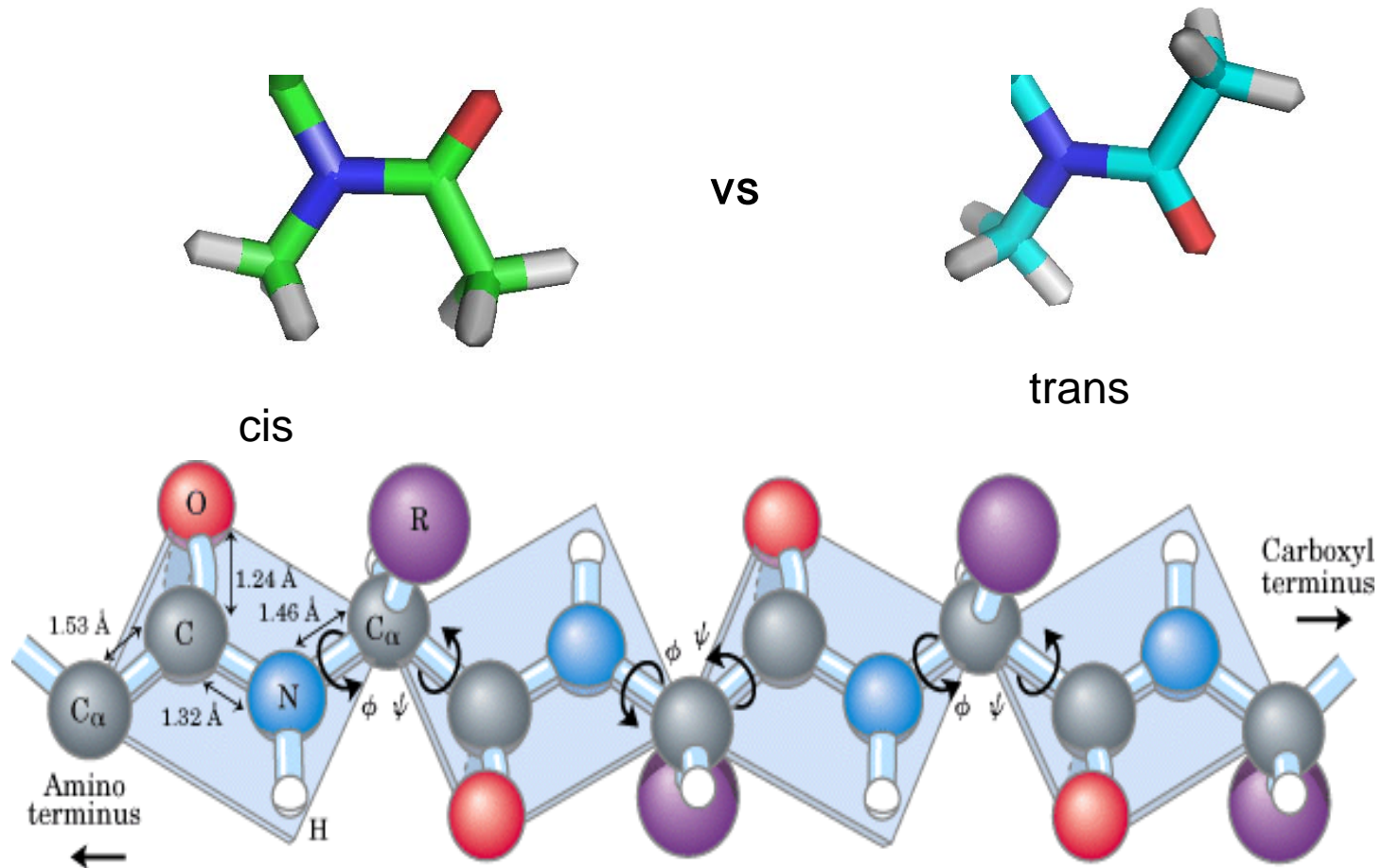
α -Helix



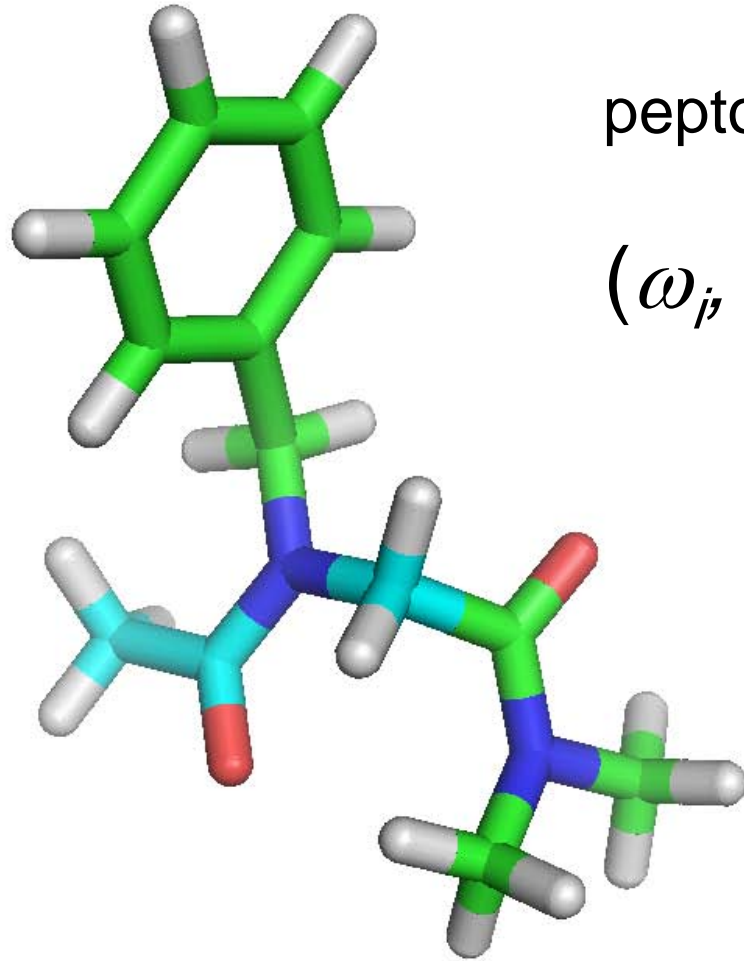
β -Sheet



Peptoids: cis/trans isomerisation



Peptoids: cis/trans isomerisation

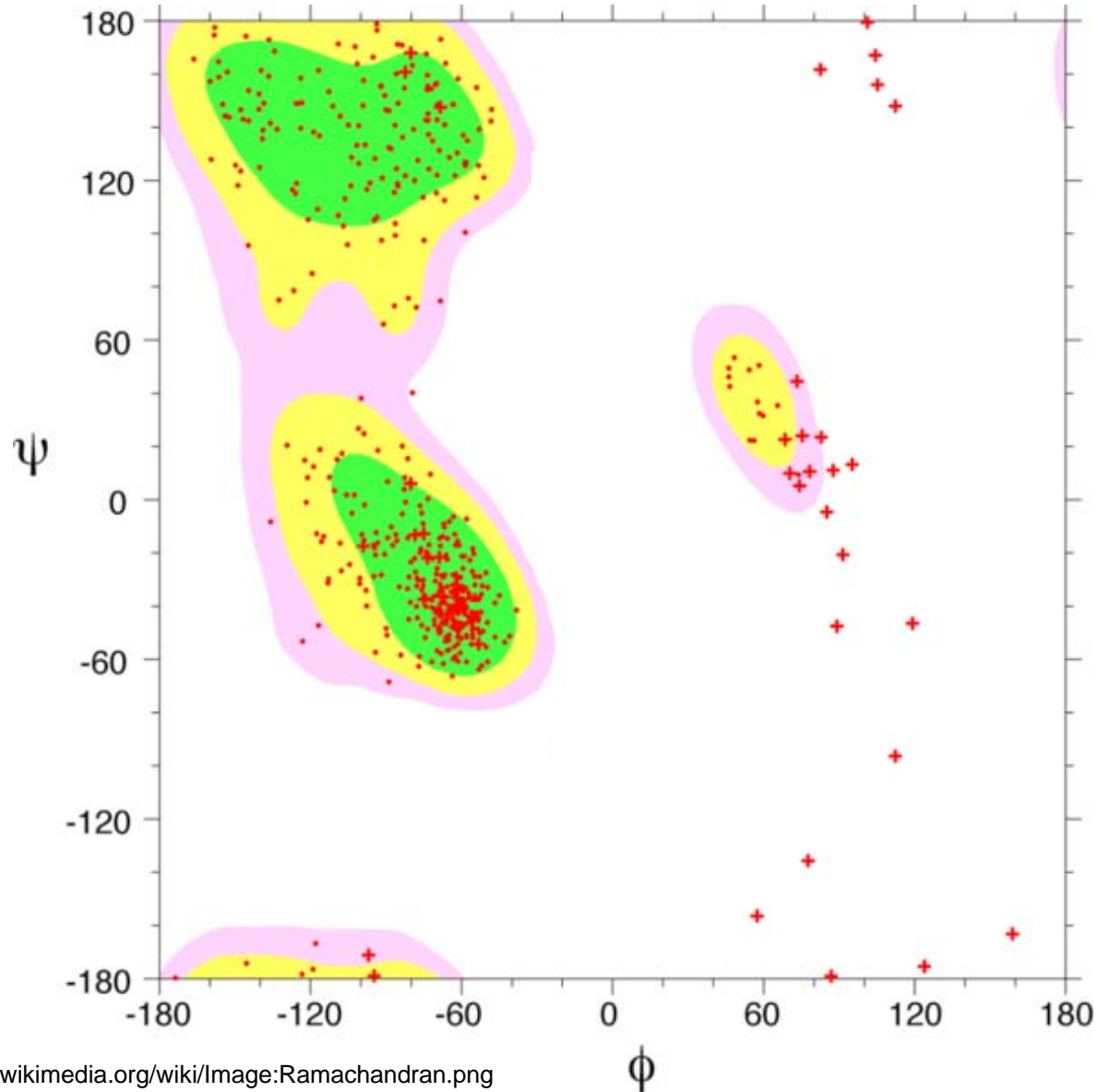


peptoid torsion indexing:

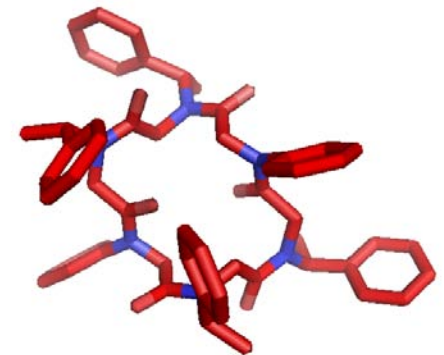
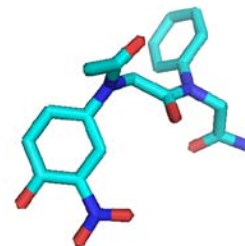
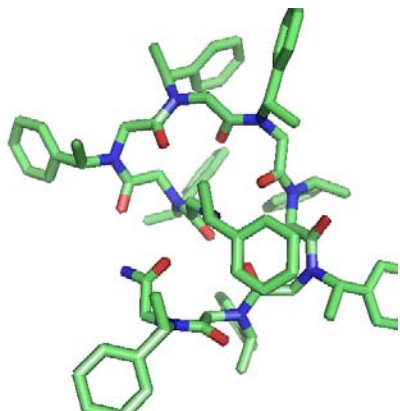
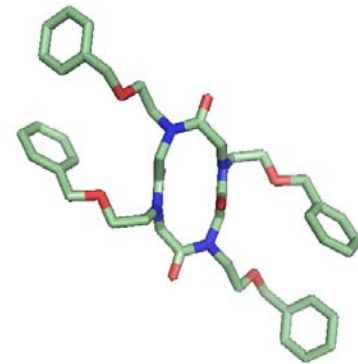
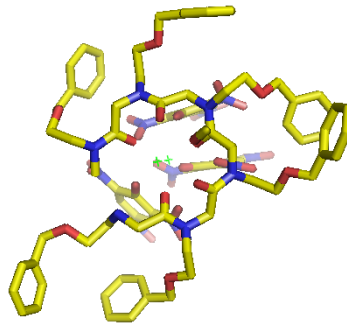
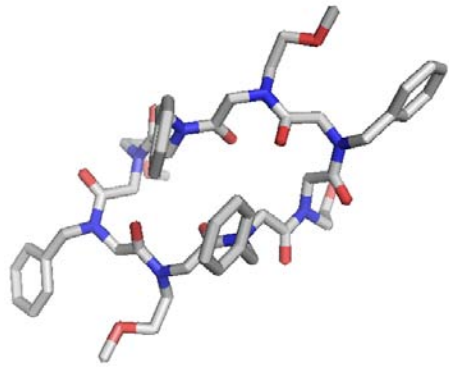
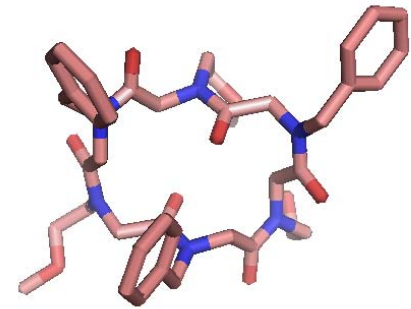
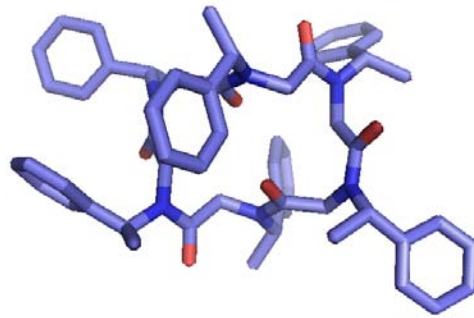
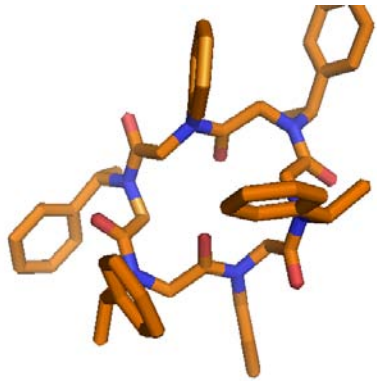
$$(\omega_j, \phi_j, \psi_j)$$

Peptoids: designable foldamers?

PDB: 50,000+
Structures

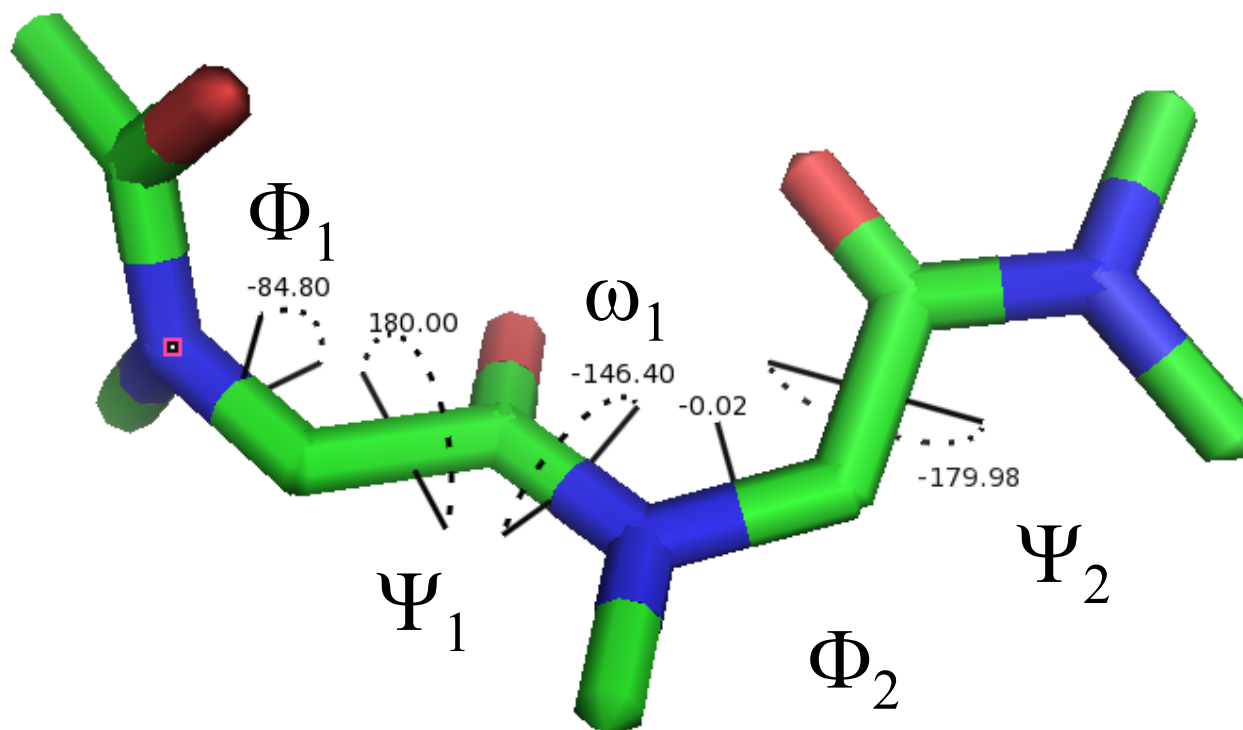


Peptoids: ~10 known structures



Peptoids: designable foldamers?

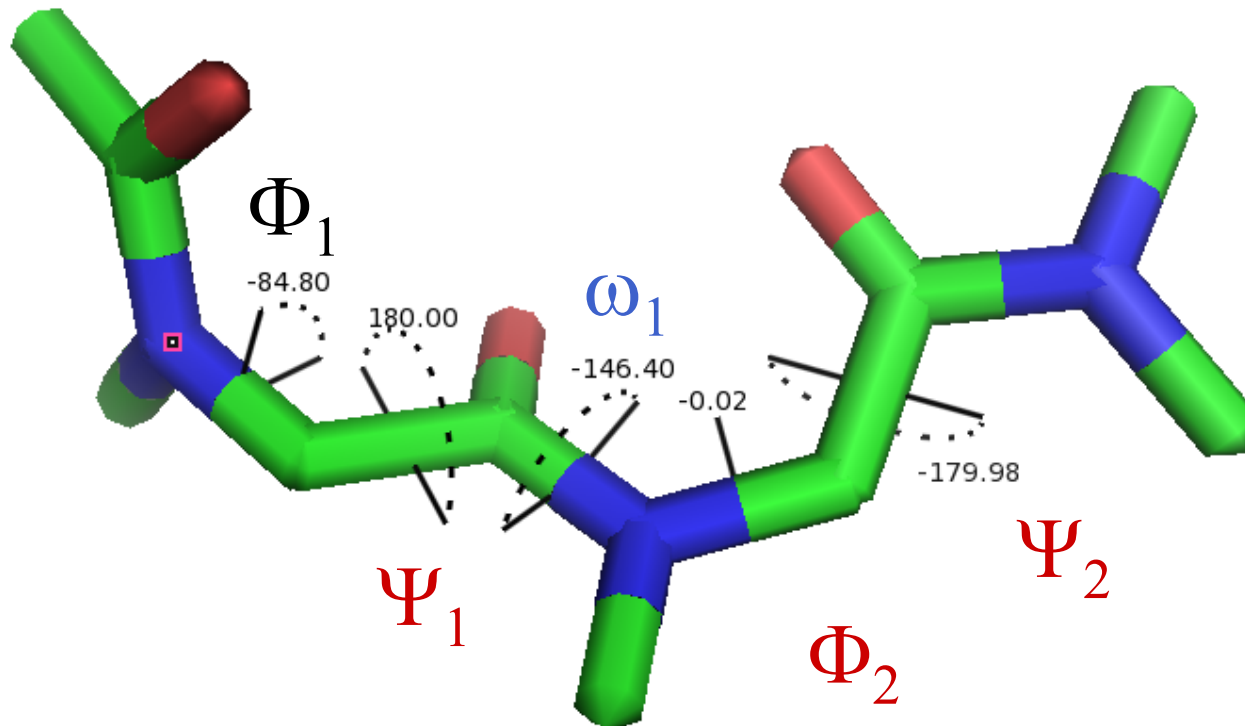
QM: Model Compound



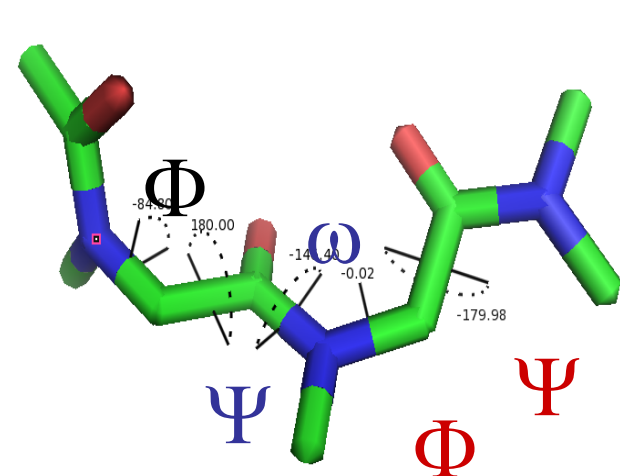
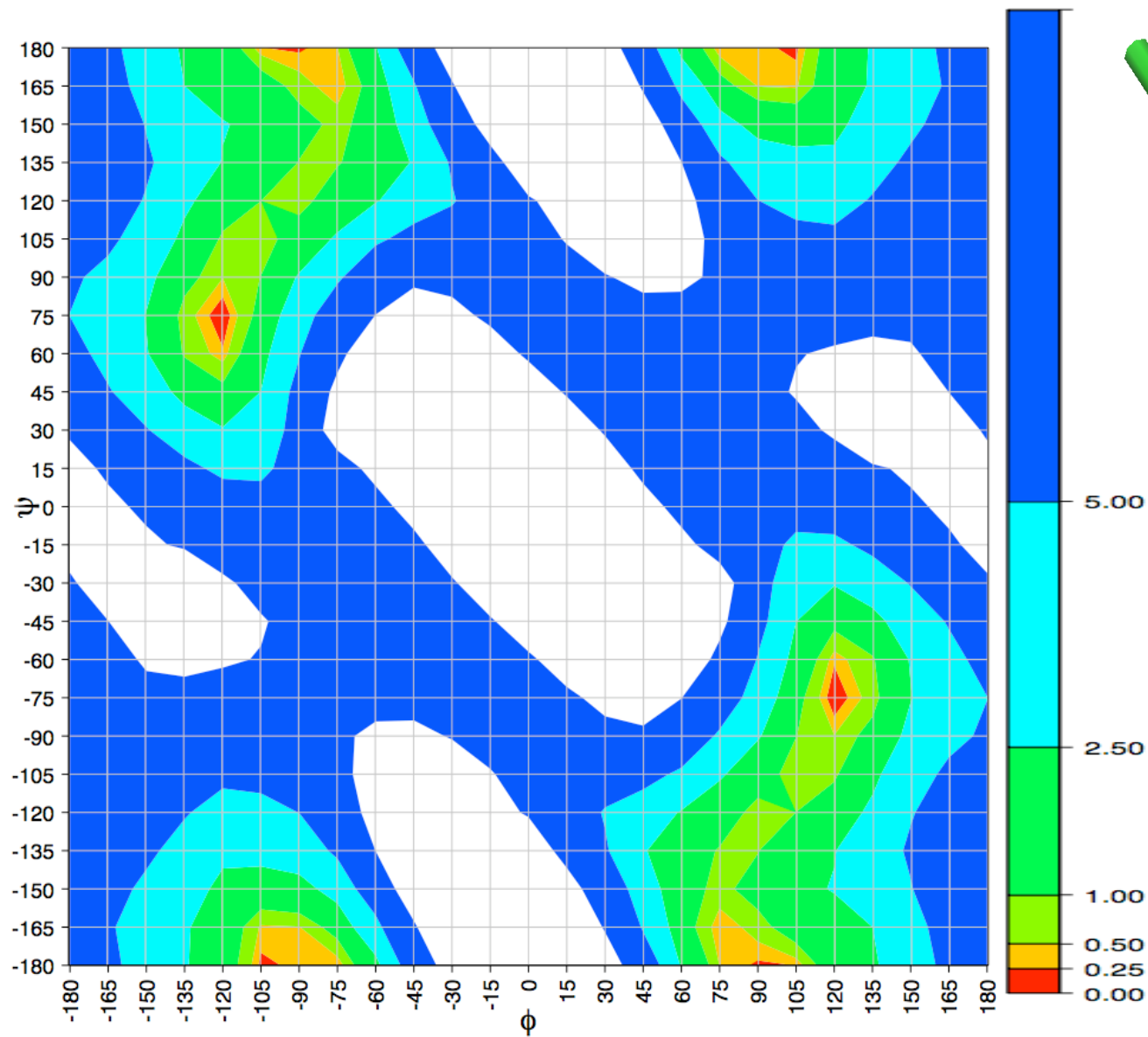
Butterfoss GL, Renfrew PD, Kuhlman B, Kirshenbaum K, Bonneau R.
J Am Chem Soc. 2009 13:16798-807.

Peptoids: backbone conformational scan

Red angles - combinatorial scan every 15 deg



Peptoid Ramachandran energy surface



5.00

trans

kcal/mol

2.50

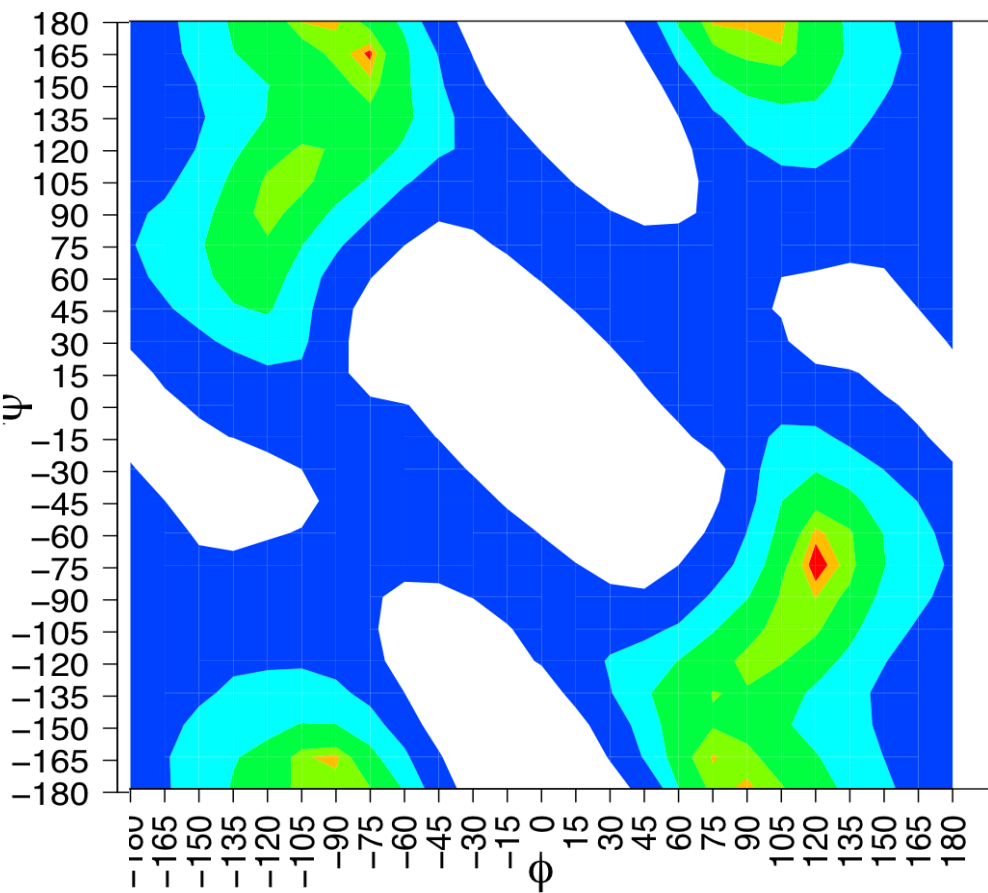
1.00

0.50

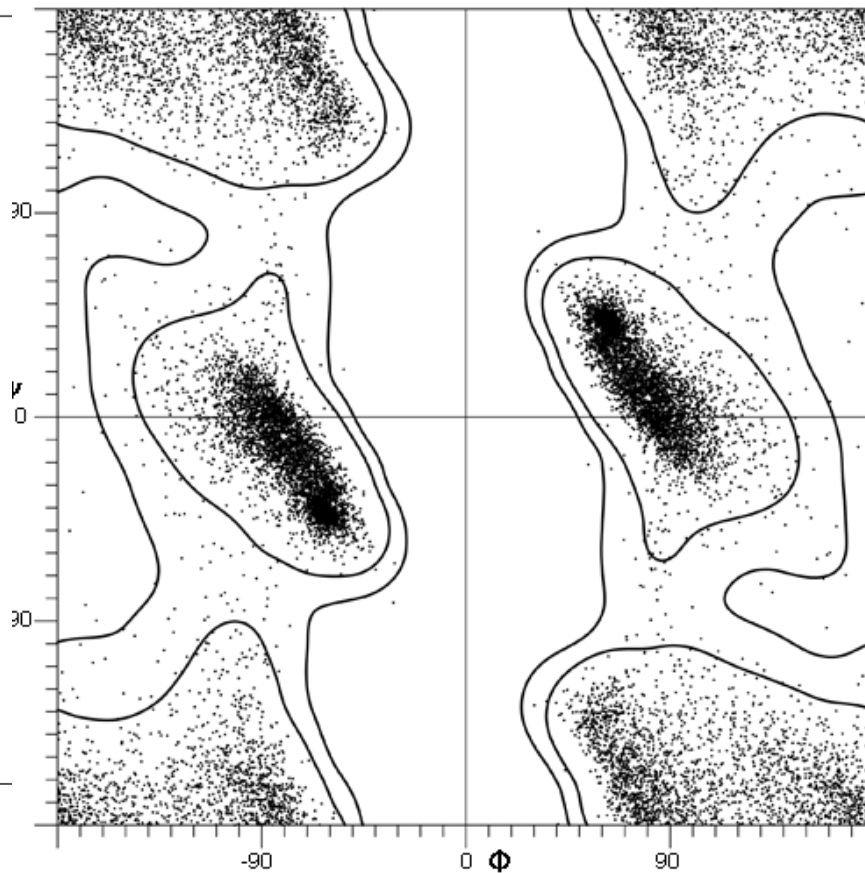
0.25

0.00

Peptoid Ramachandran energy surface

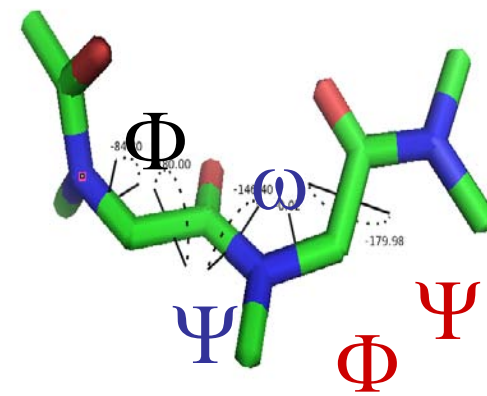
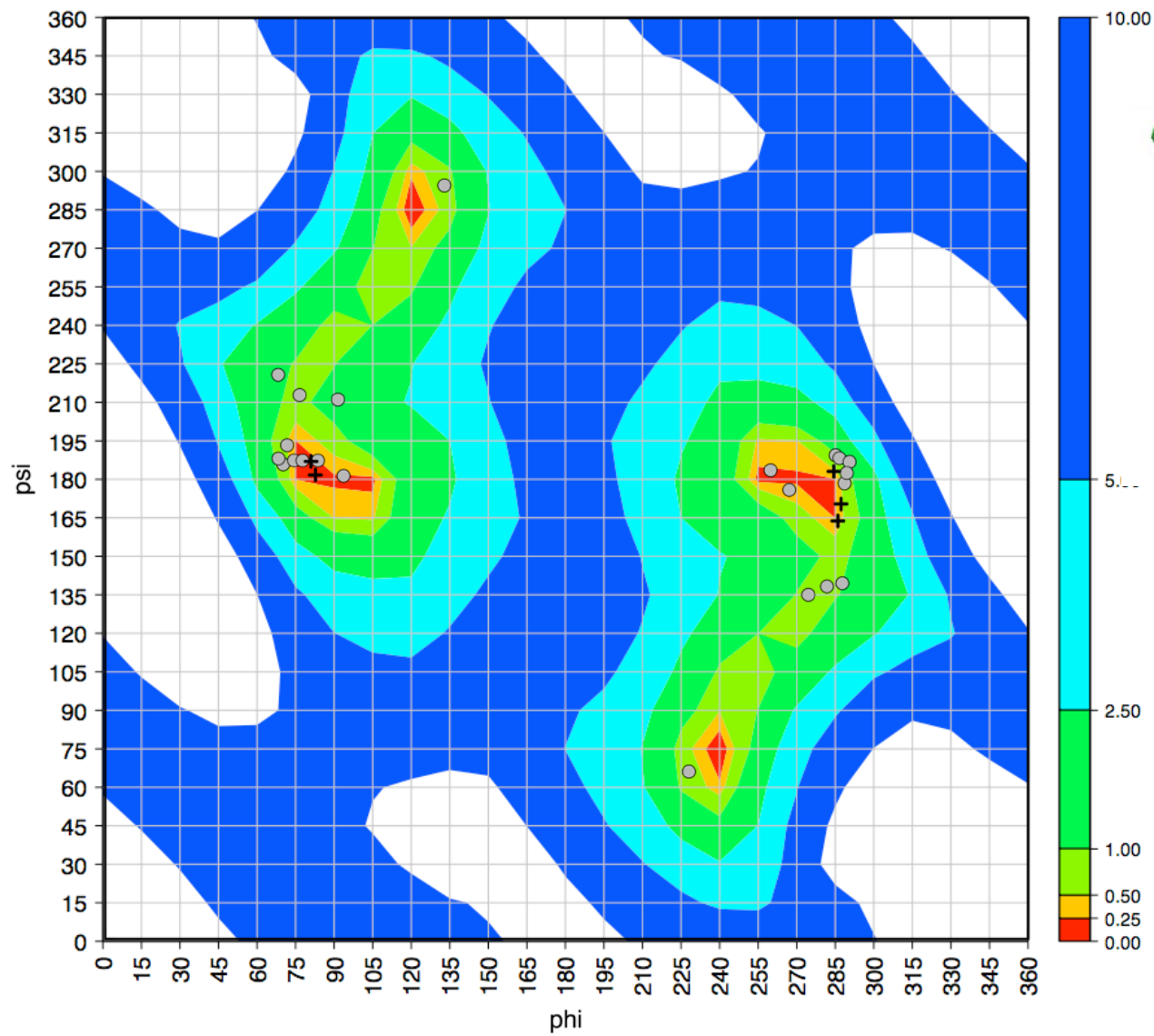


trans



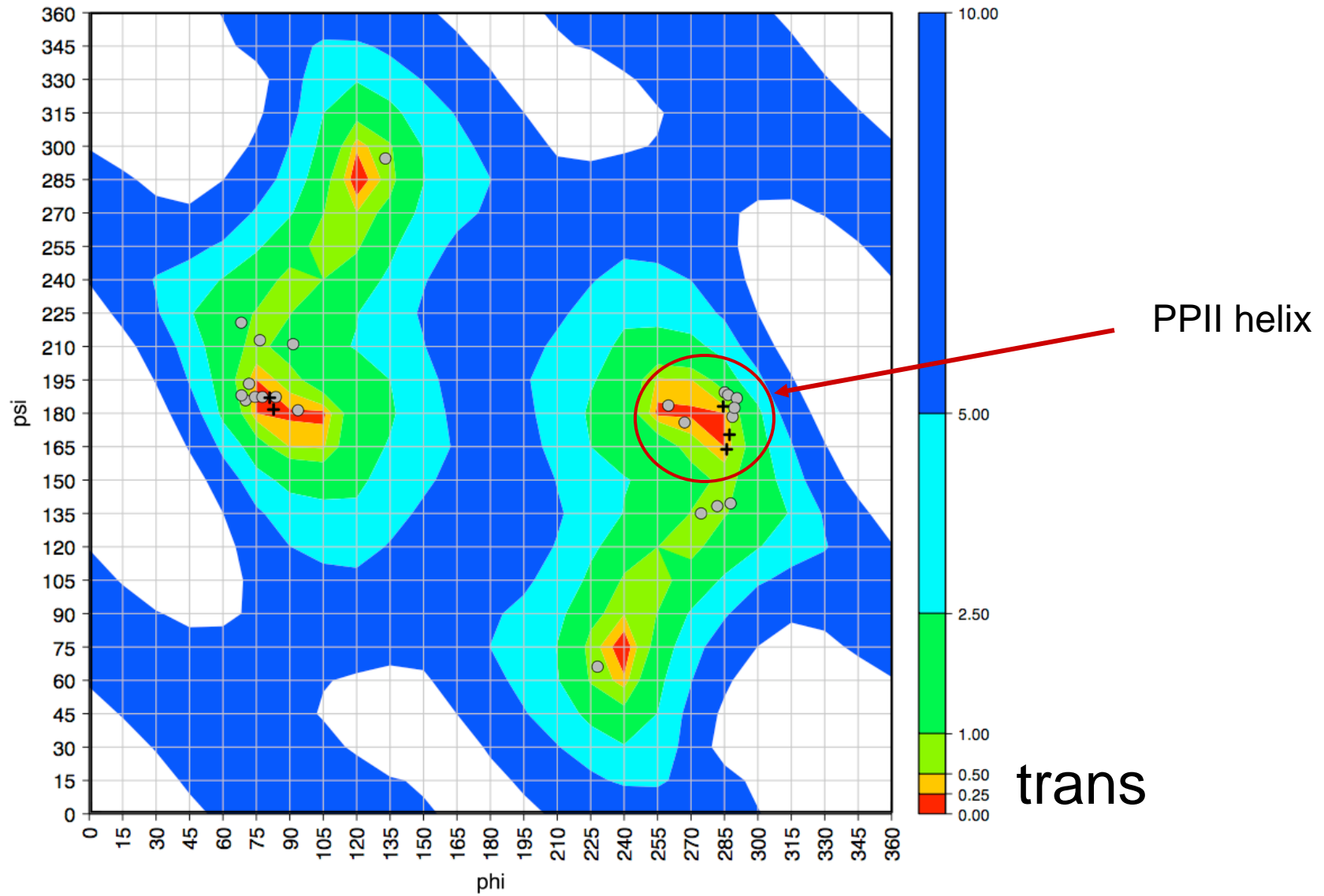
glycine

Peptoid Ramachandran energy surface

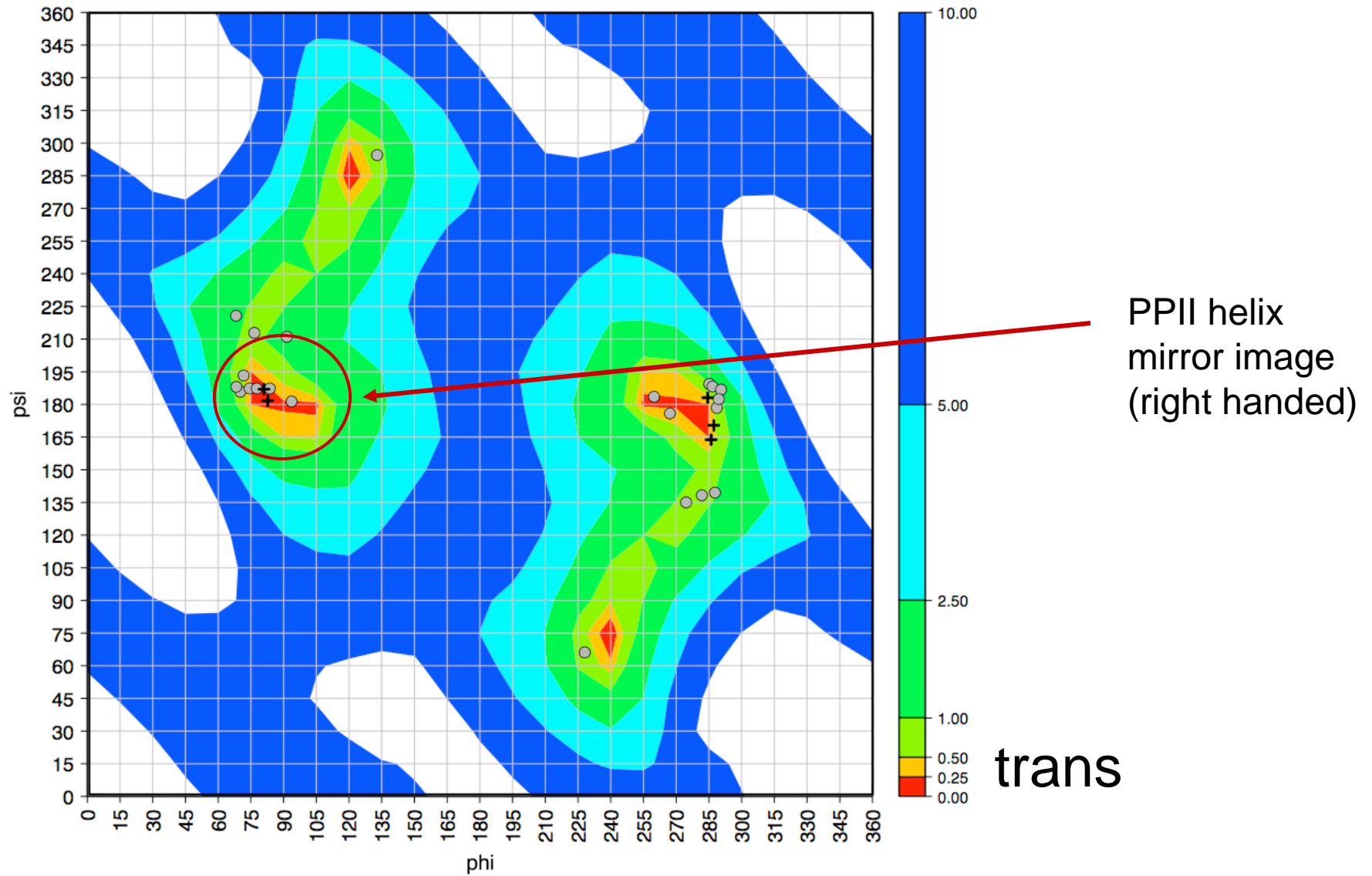


trans

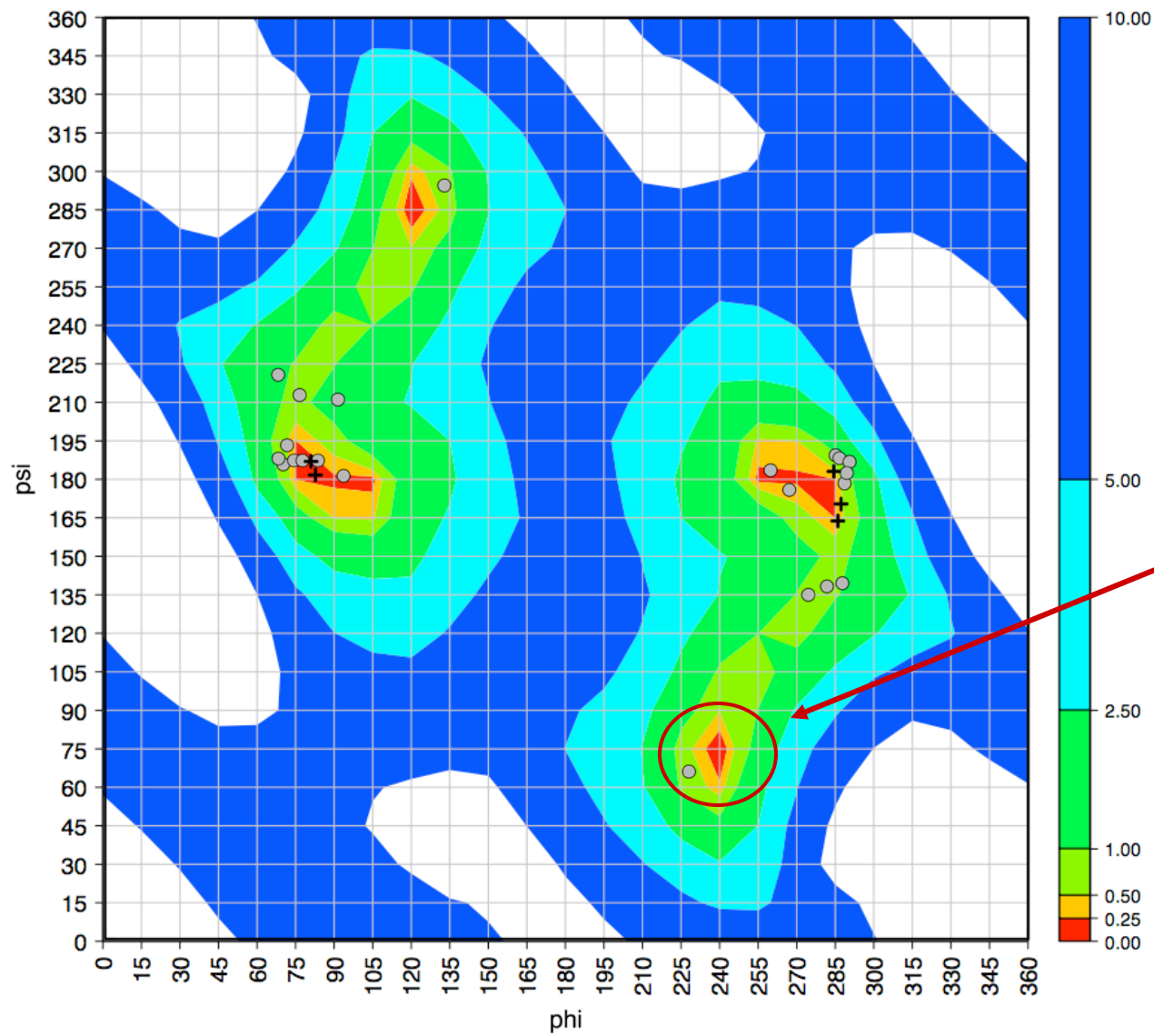
Peptoid Ramachandran energy surface



Peptoid Ramachandran energy surface

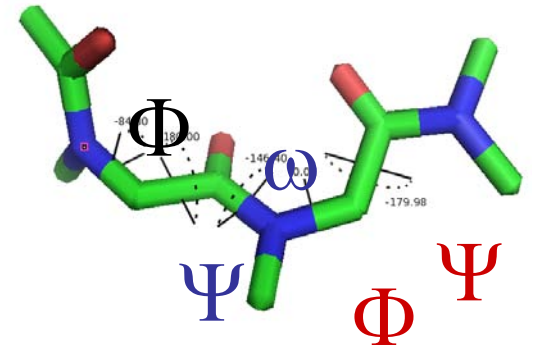
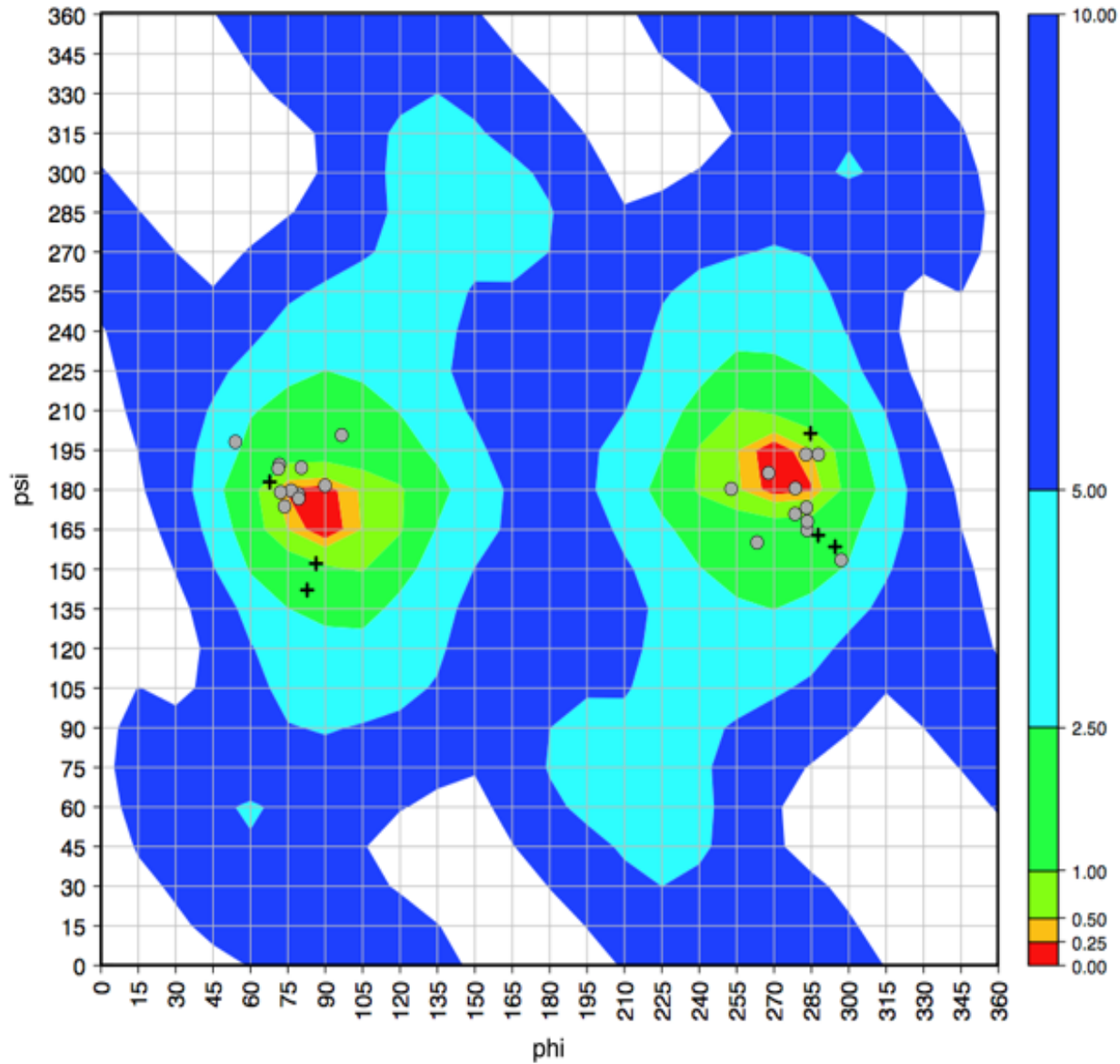


Peptoid Ramachandran energy surface



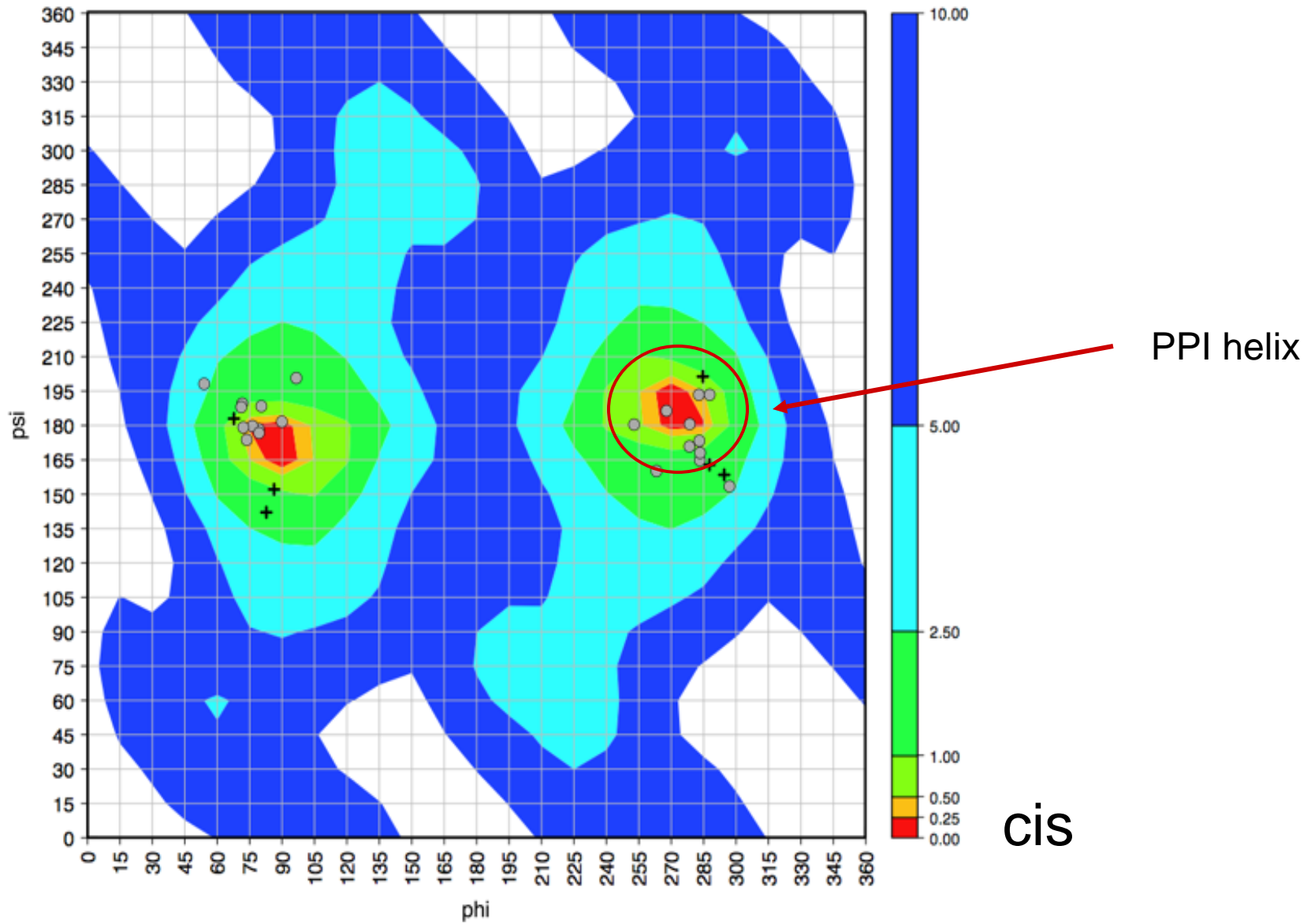
trans

Peptoid Ramachandran energy surface



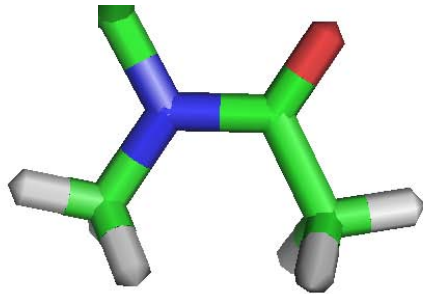
cis

Peptoid Ramachandran energy surface

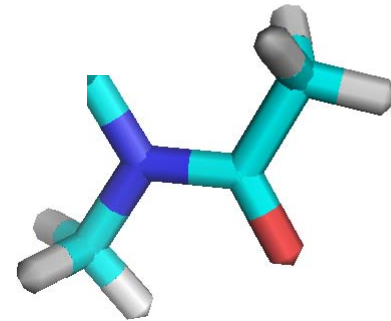


Peptoid amide isomerization:

VS

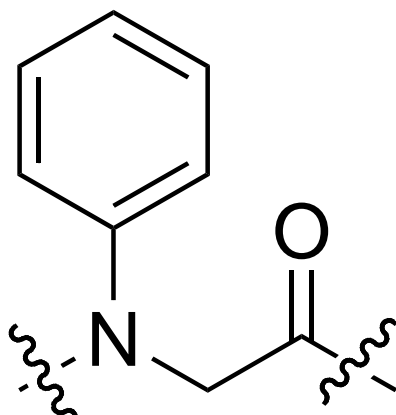


cis



trans

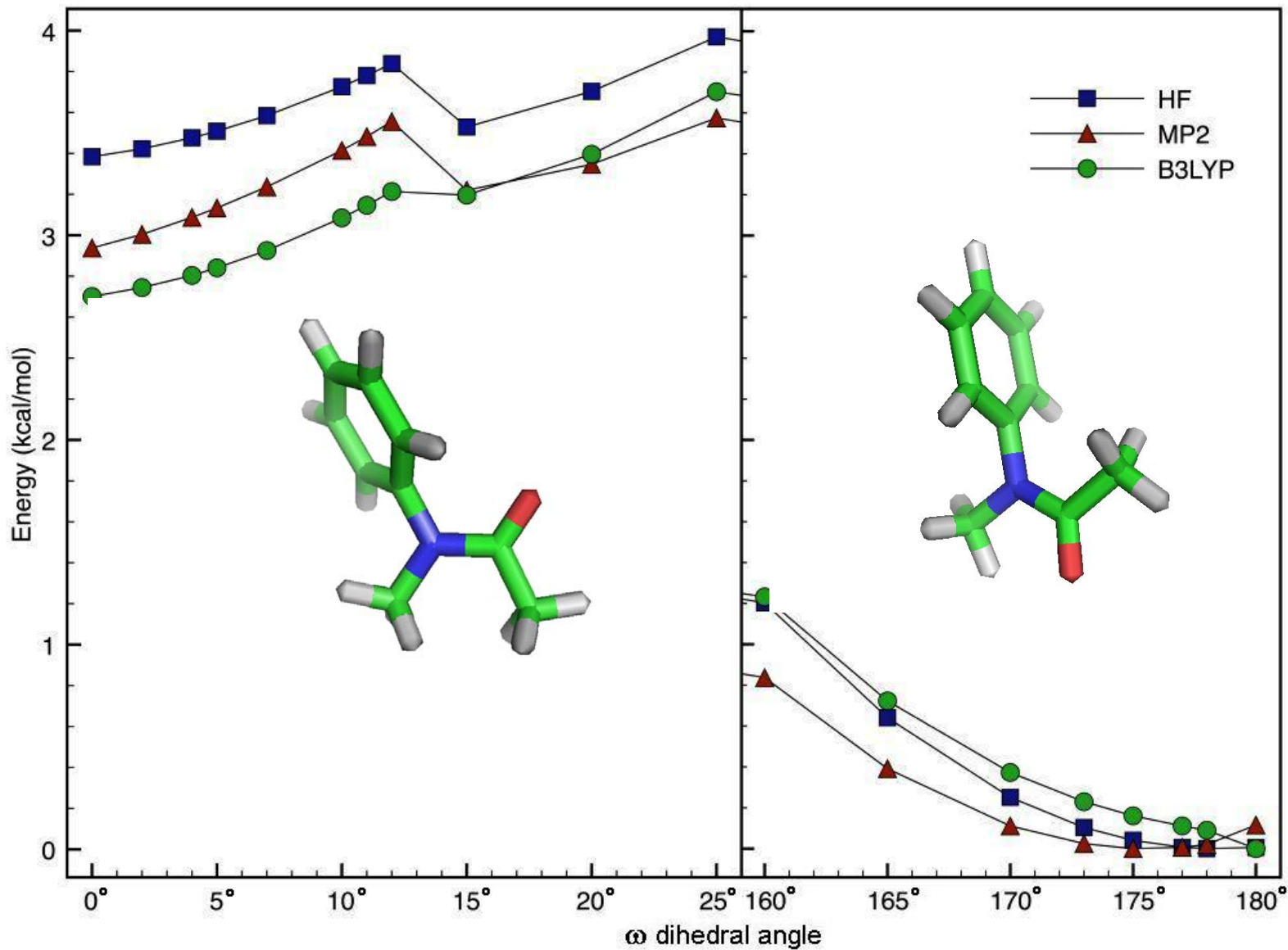
Peptoids: *N*-aryl side chains



Shah NH, Butterfoss GL, Nguyen K, Yoo B, Bonneau R, Rabenstein DL, Kirshenbaum K.
J Am Chem Soc. 2008 130: 16622-32.

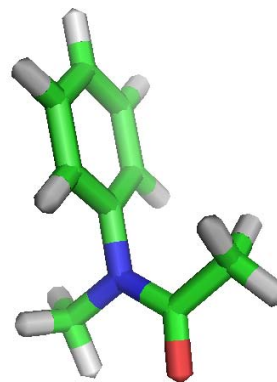
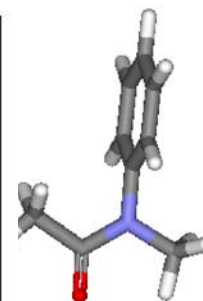
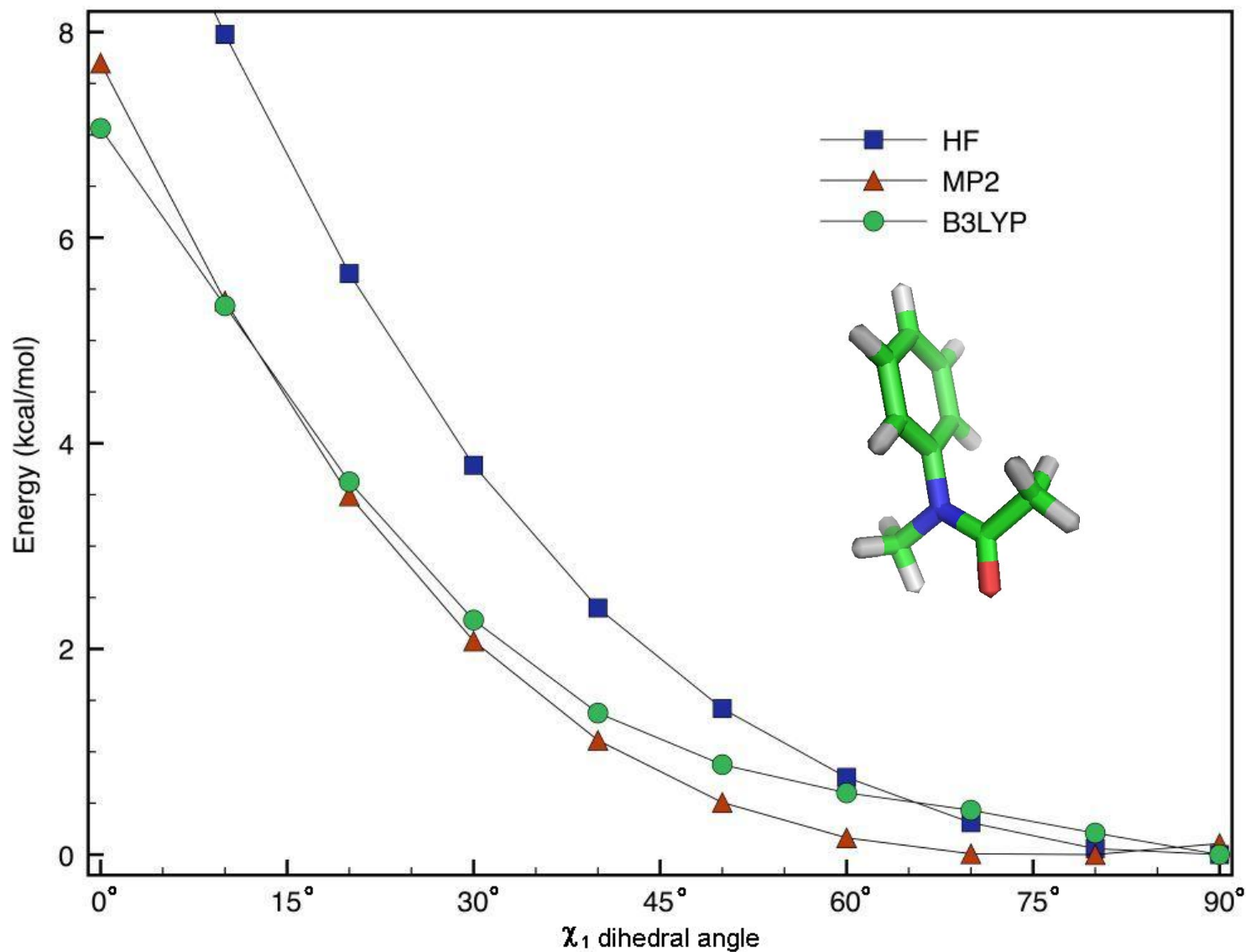
Peptoids: *N*-aryl side chains

Monomer prefers trans (consistent with NMR data)



Peptoids: *N*-aryl side chains

Chi1 prefers 90°

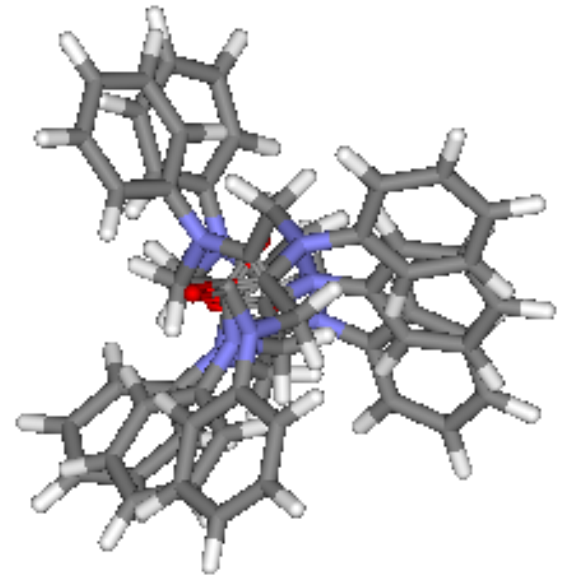
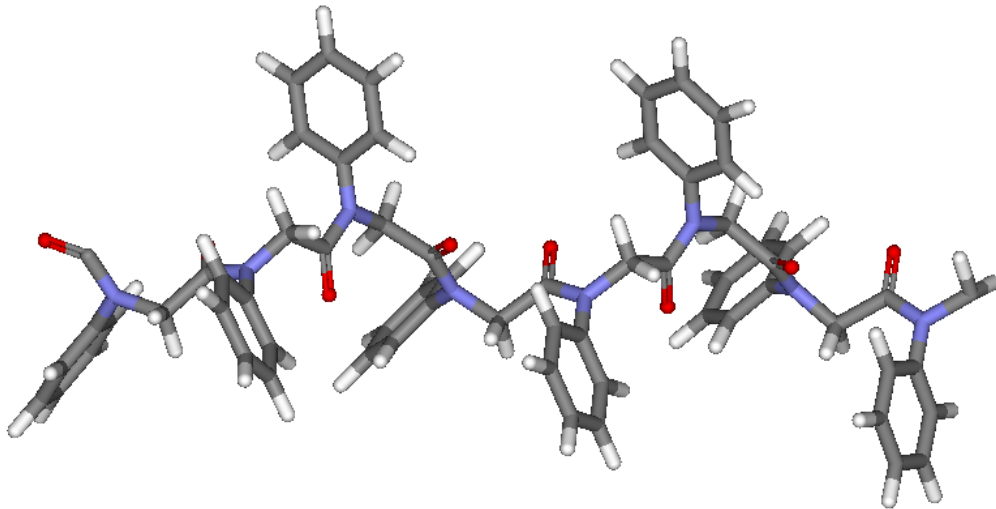


Peptoids: *N*-aryl side chains

Predicted model of *N*-aryl polymer: ~PPII helix

(φ, ψ) $(-75^\circ, 150^\circ)$

3-3.3 residues per turn



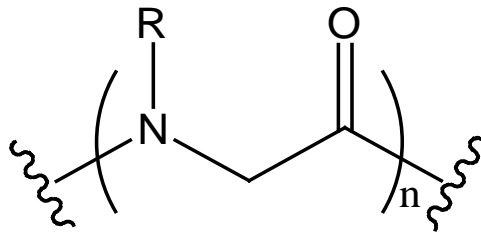
Peptoids in Rosetta

Issues:

Non canonical backbone & side chains

MM Energy functions

chi 1



Peptoid

cis / trans isomerization

movers & rotamer libraries

Peptoids in Rosetta: Energy Function Modifications

Unmodified Terms

Inter-residue Lennard-Jones

Hydrogen Bond term

Solvation term

Add

MM torsion term

MM intra residue LJ term

Explicit unfolded

Remove

Dunbrack internal energy term

Ramachandran backbone torsion

Reference energy

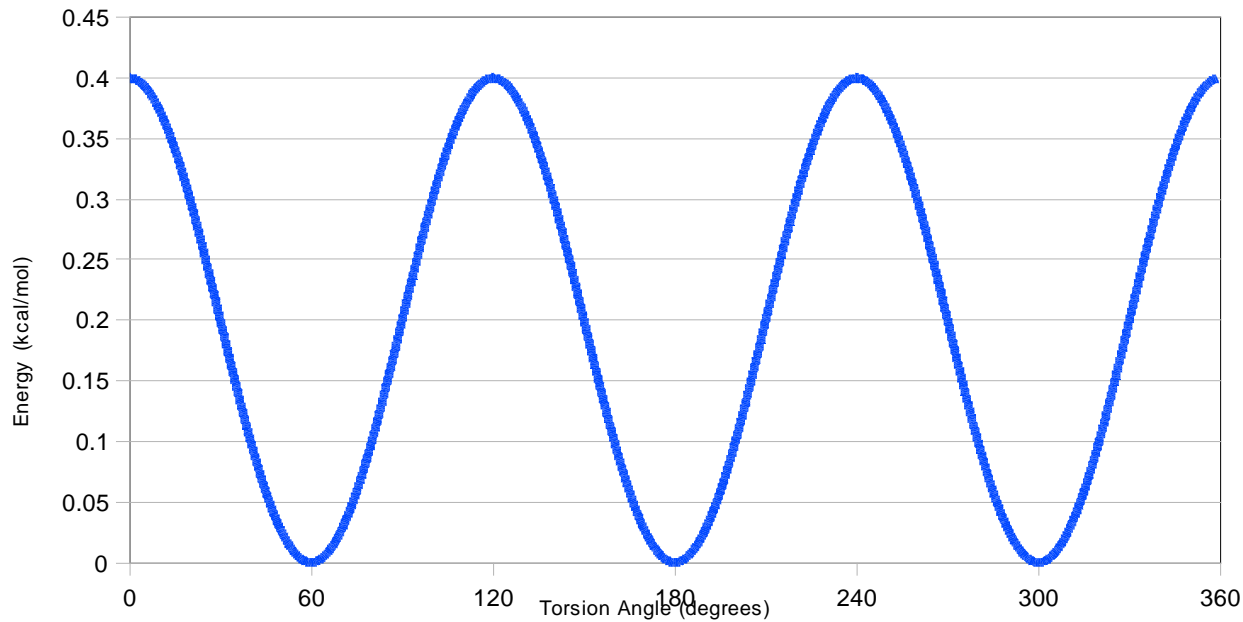
Peptoids in Rosetta: Energy Function Modifications

Torsions

Default CHARMM 27

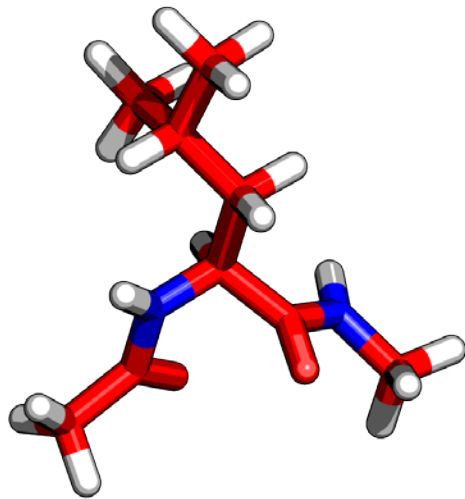
Need new parameters for peptoid nitrogen

Energy vs. Torsion Angle



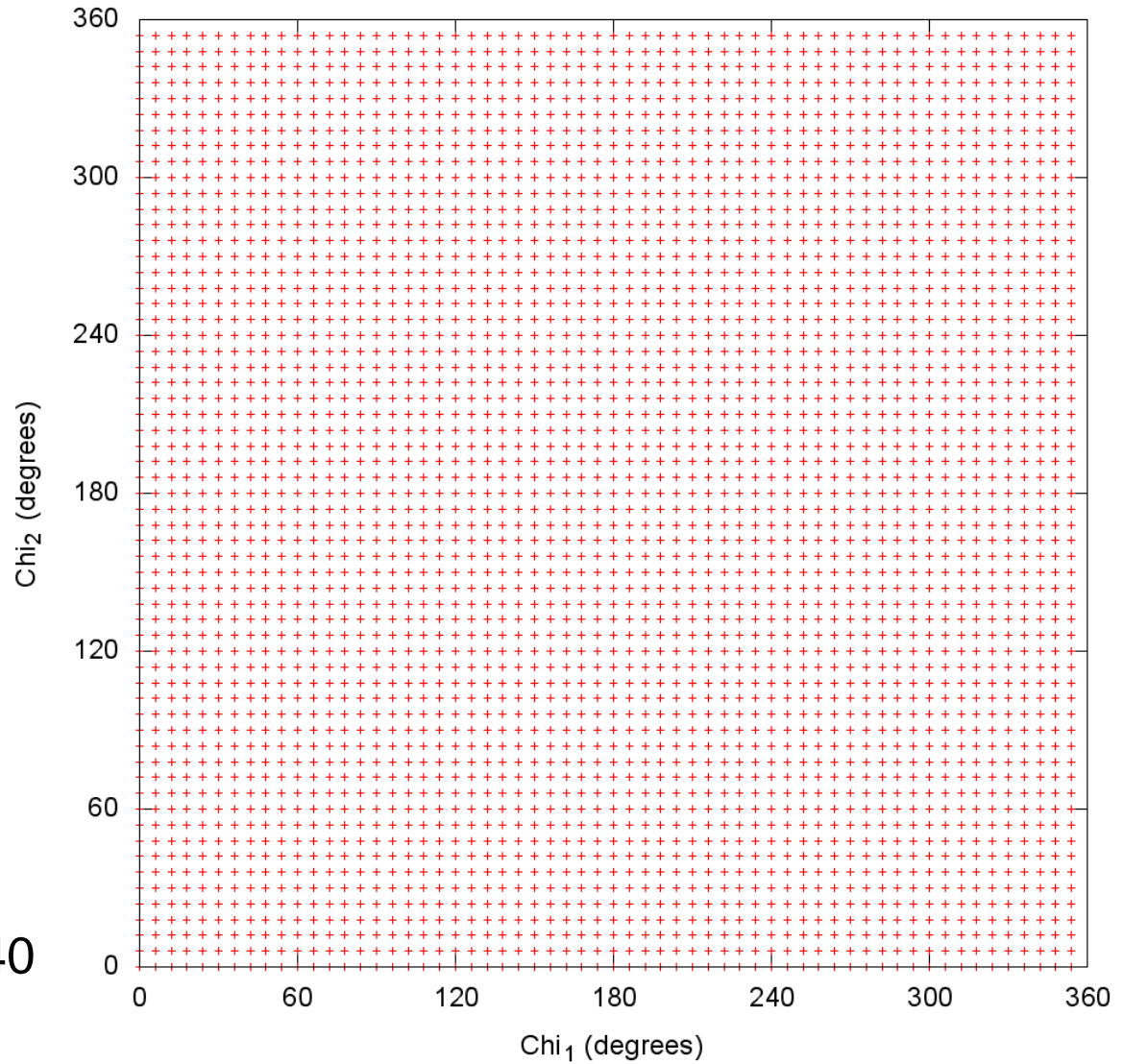
Peptoids in Rosetta: Rotamer Libraries

dipeptide models
- span torsion space



Leucine $\phi = -60$, $\psi = 40$

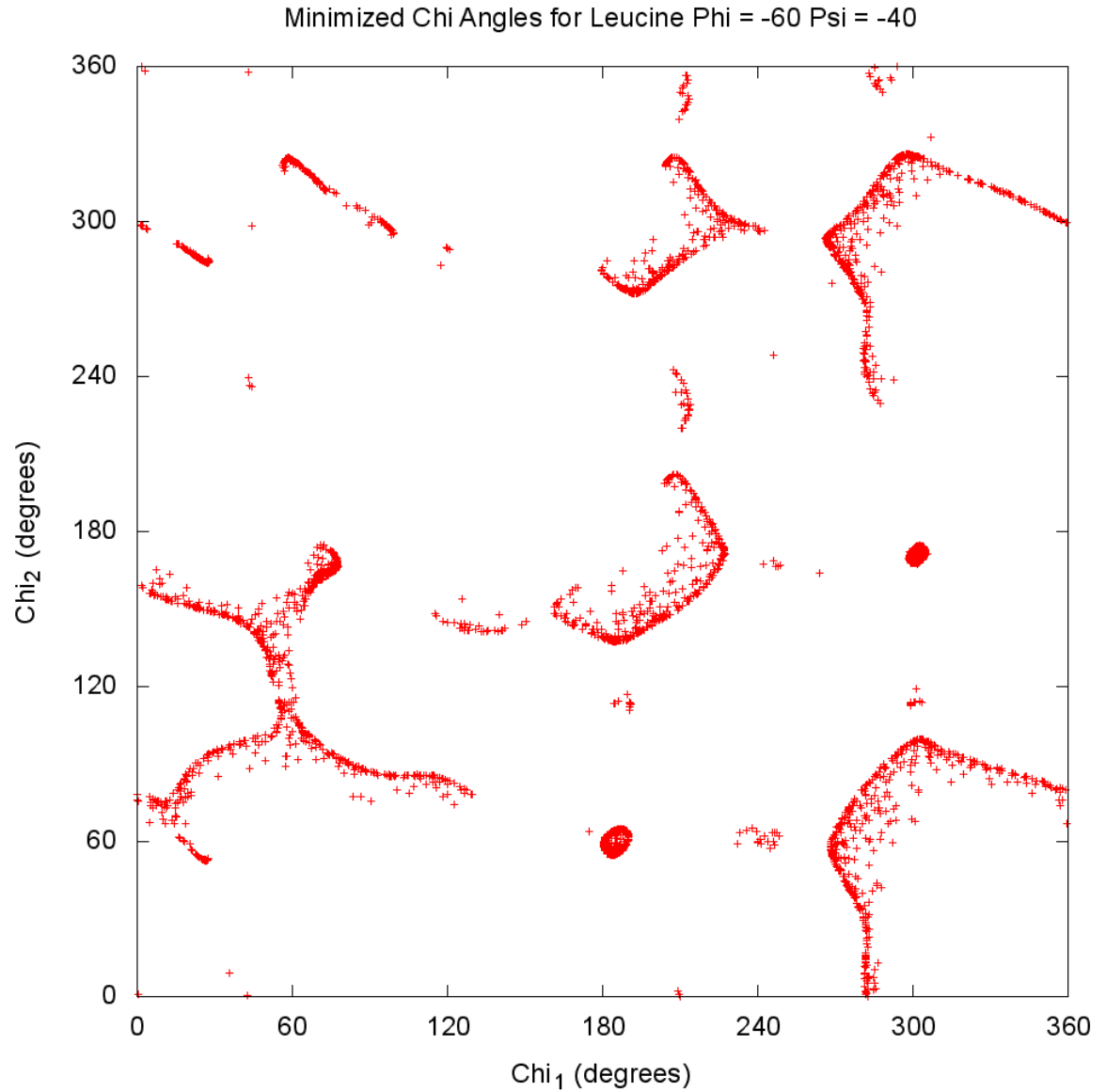
Initial Chi Angles for Leucine $\Phi = -60$ $\Psi = -40$



Peptoids in Rosetta: Rotamer Libraries

Minimize side chains

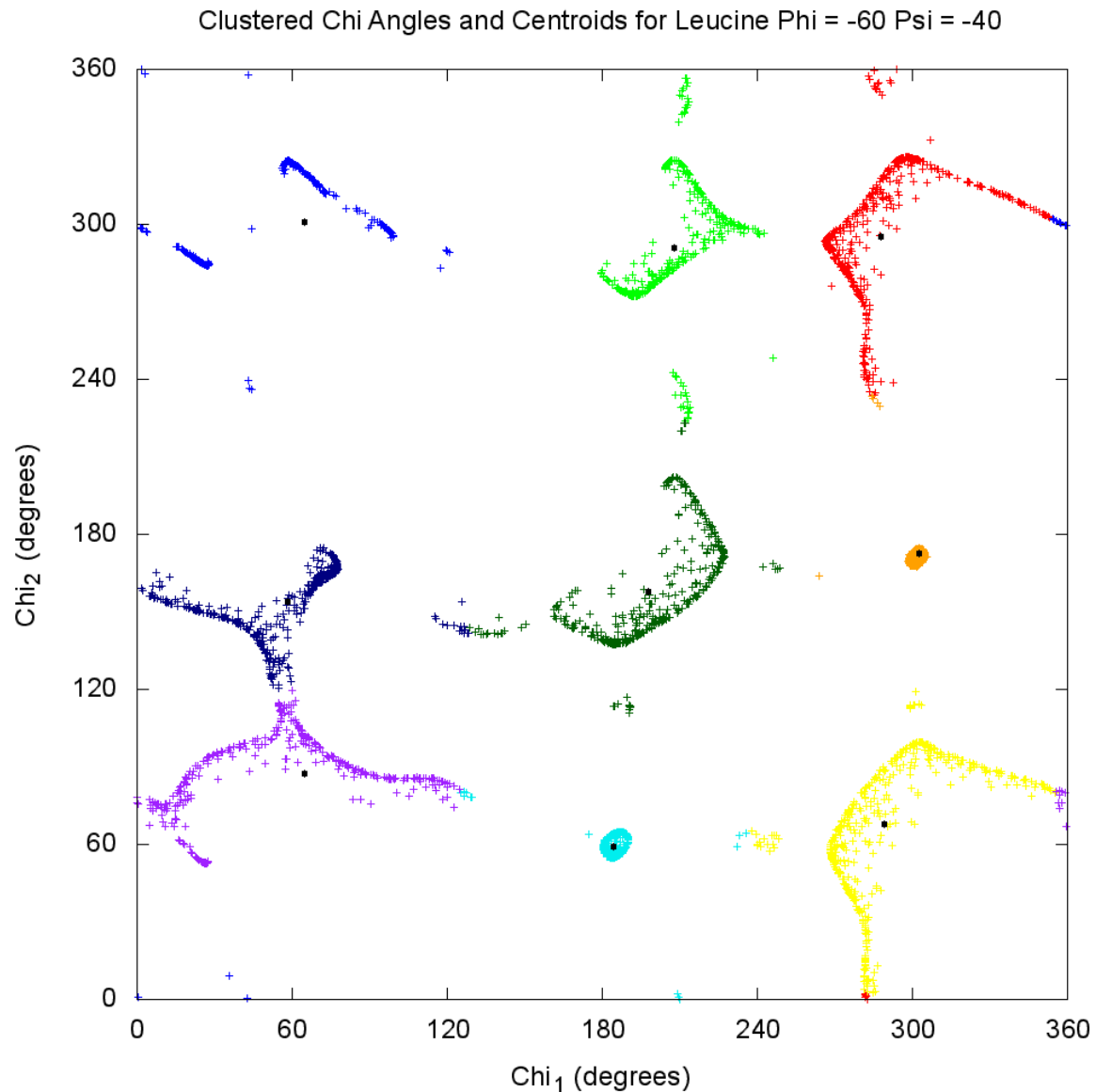
Backbone dihedrals
fixed



Peptoids in Rosetta: Rotamer Libraries

Cluster χ angles

Low energy side chains form compact clusters



Peptoids in Rosetta: Rotamer Libraries

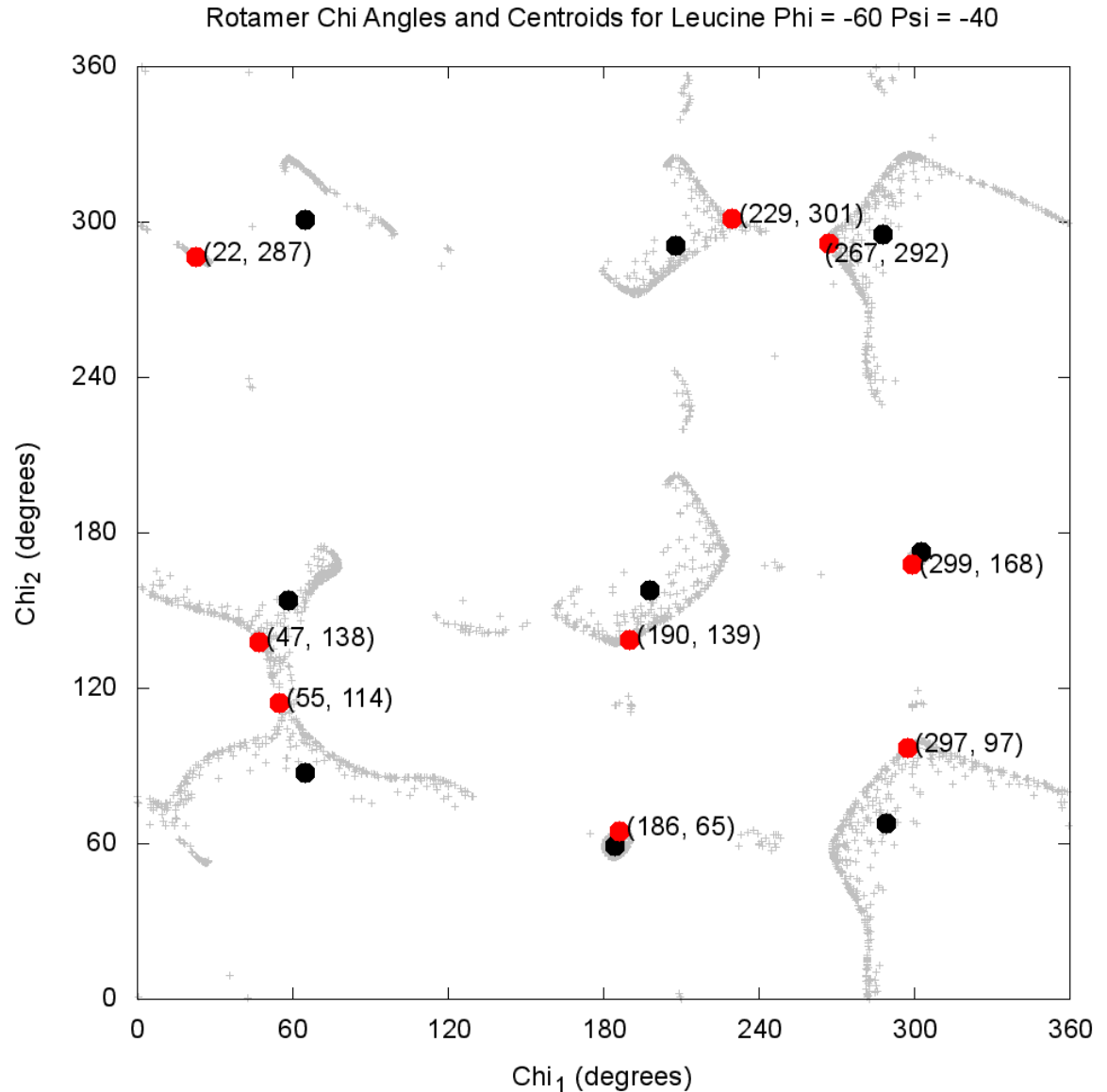
Each cluster represents
a rotamer

Angles from lowest
Energy side chain

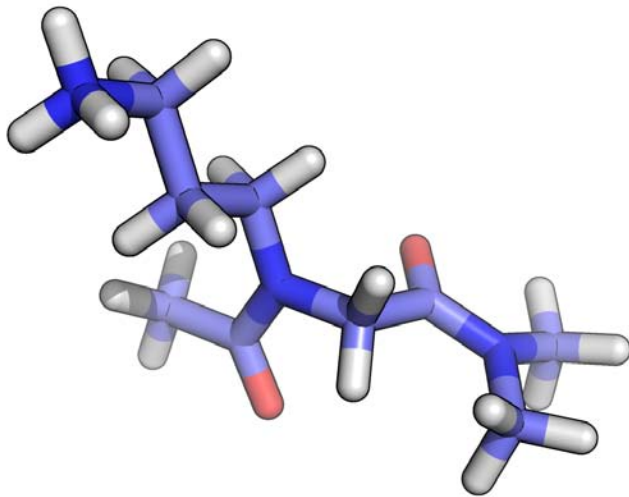
Energies converted
To probabilities

● Rotamer

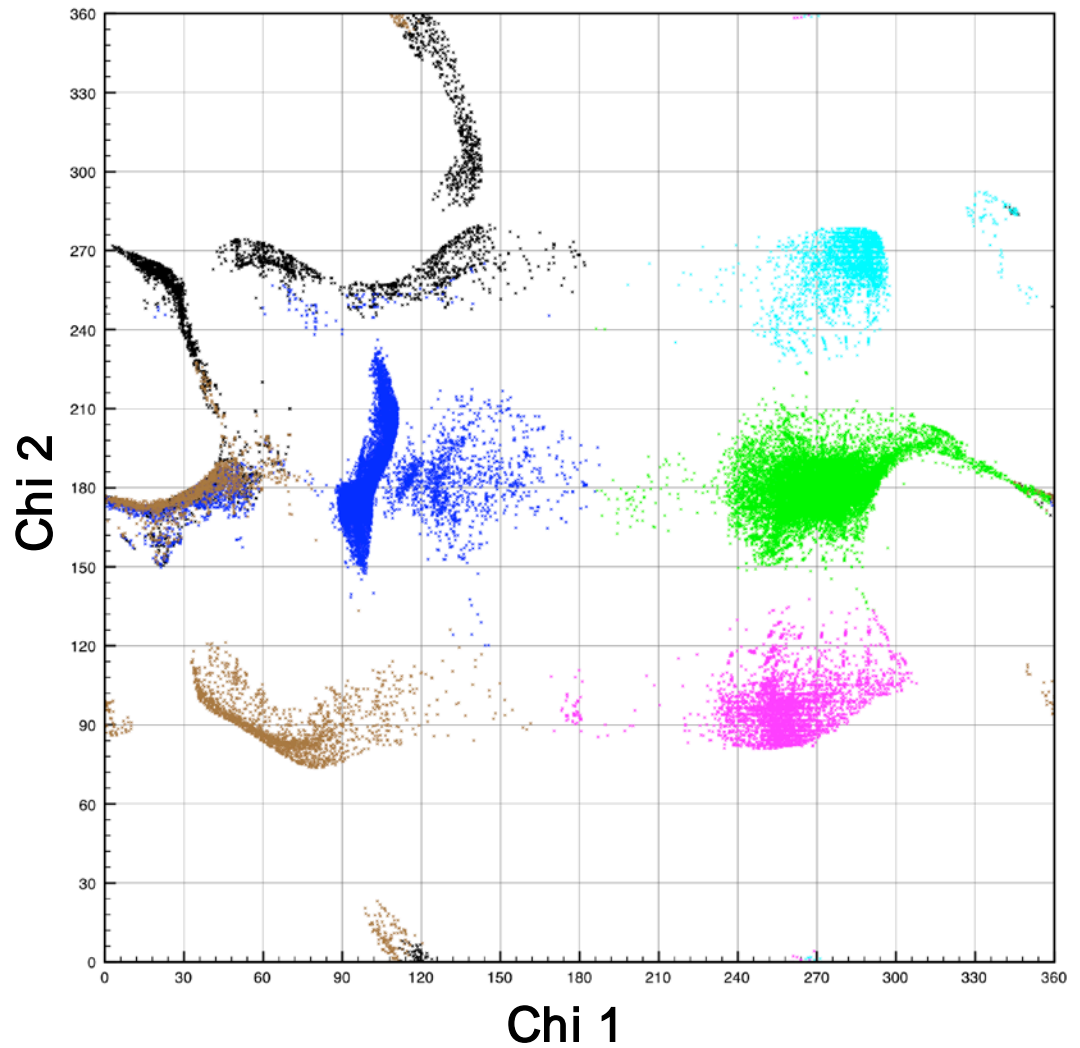
● Cluster center



Peptoids in Rosetta: Rotamer Libraries

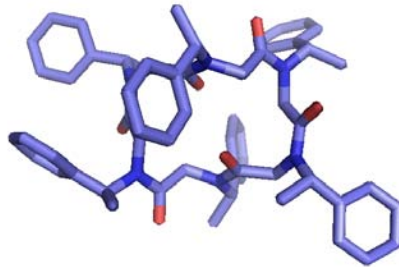
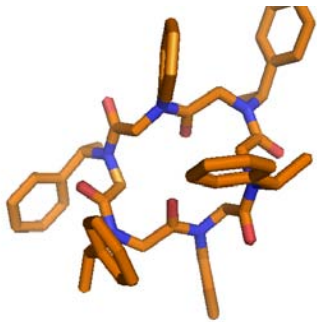


Ornithine-like
peptoid

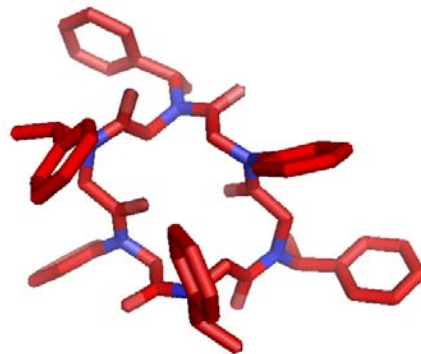
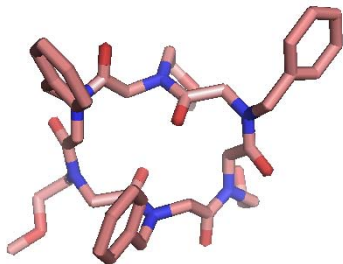


Peptoids: examples

Cyclo-hexamers with same backbone structure



QuickTime™ and a decompressor are needed to see this picture.



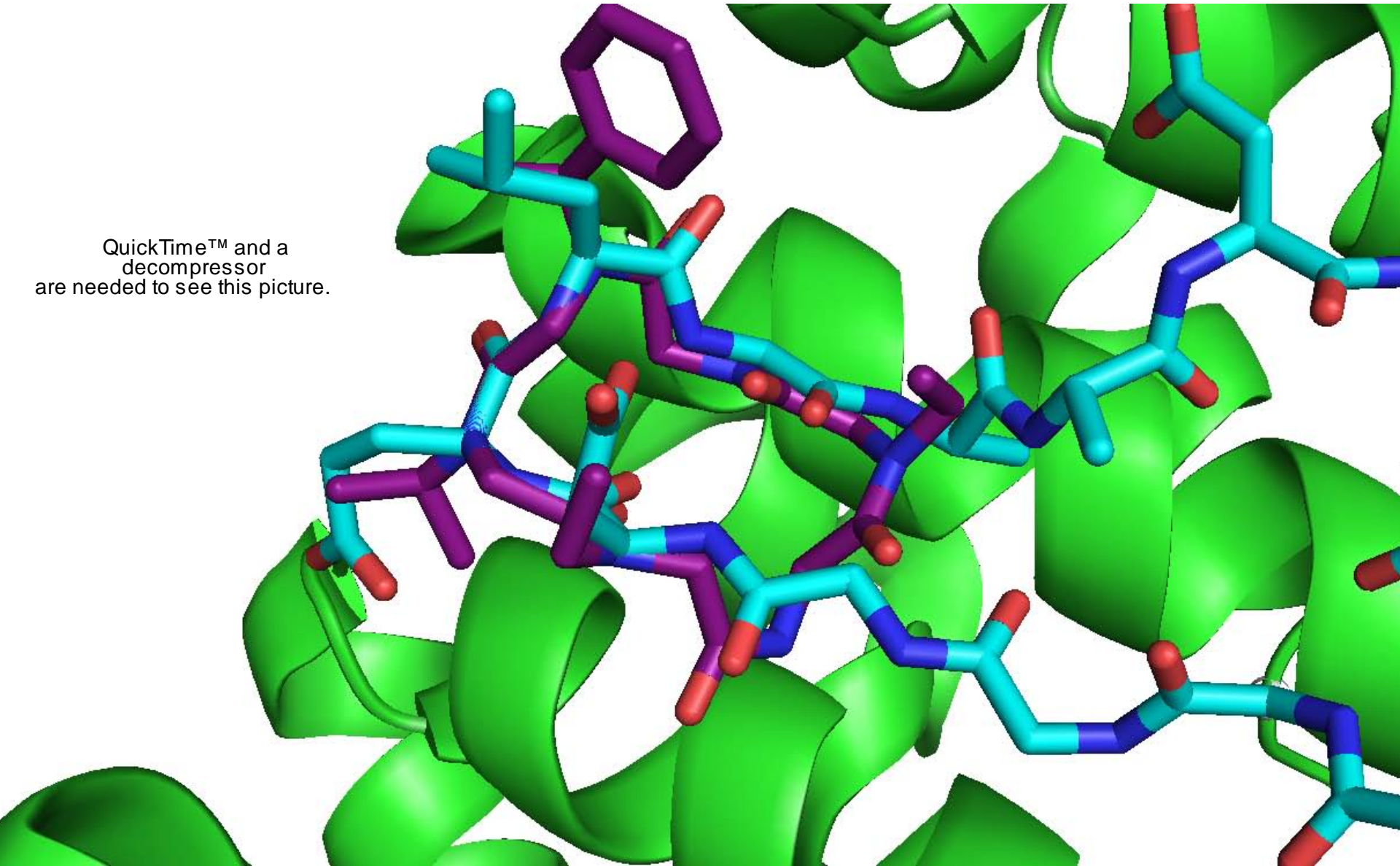
Blue: cyclic hexamer
Yellow: peptide type-I β -turn

Purple: Peptoid macrocycle

Cyan: TCF

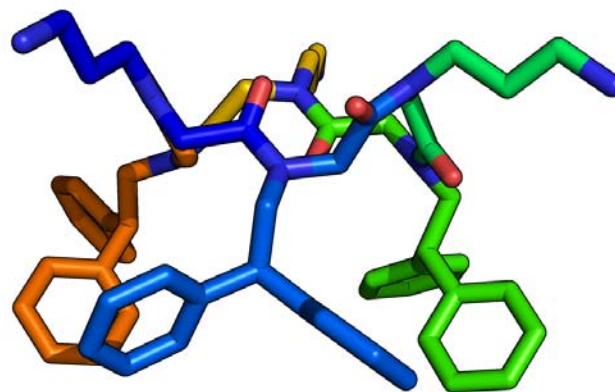
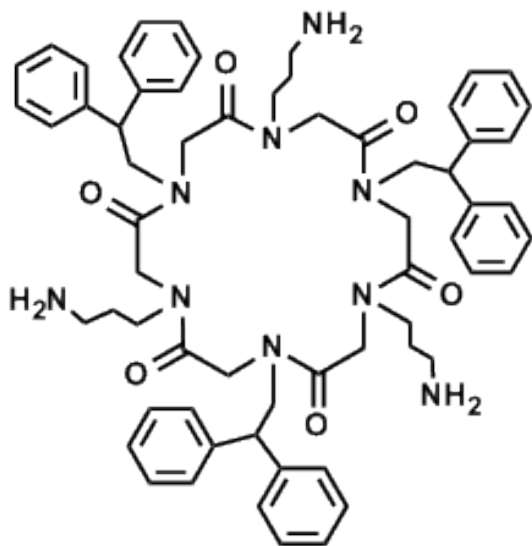
Green: β -Catenin

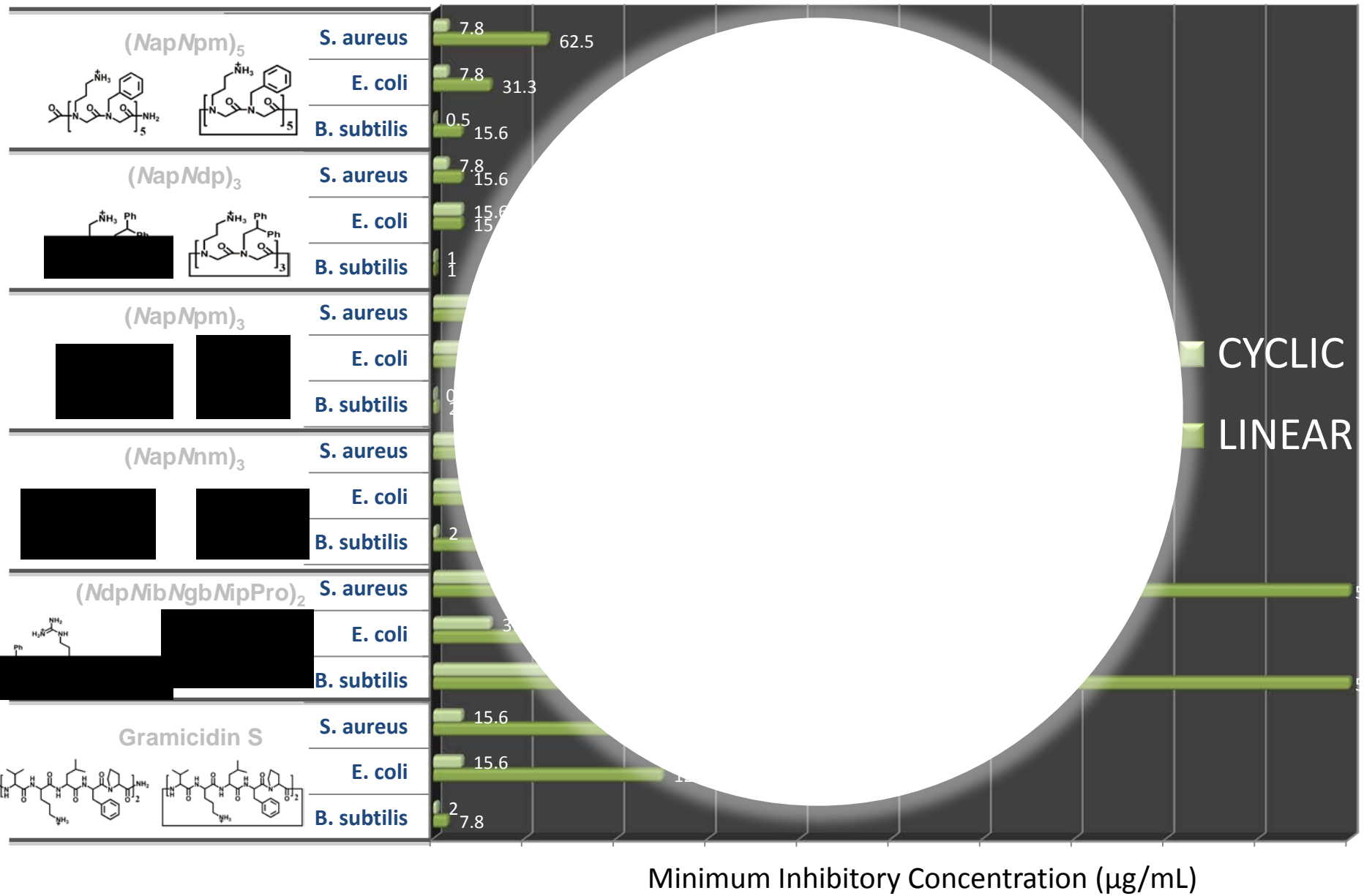
QuickTime™ and a
decompressor
are needed to see this picture.



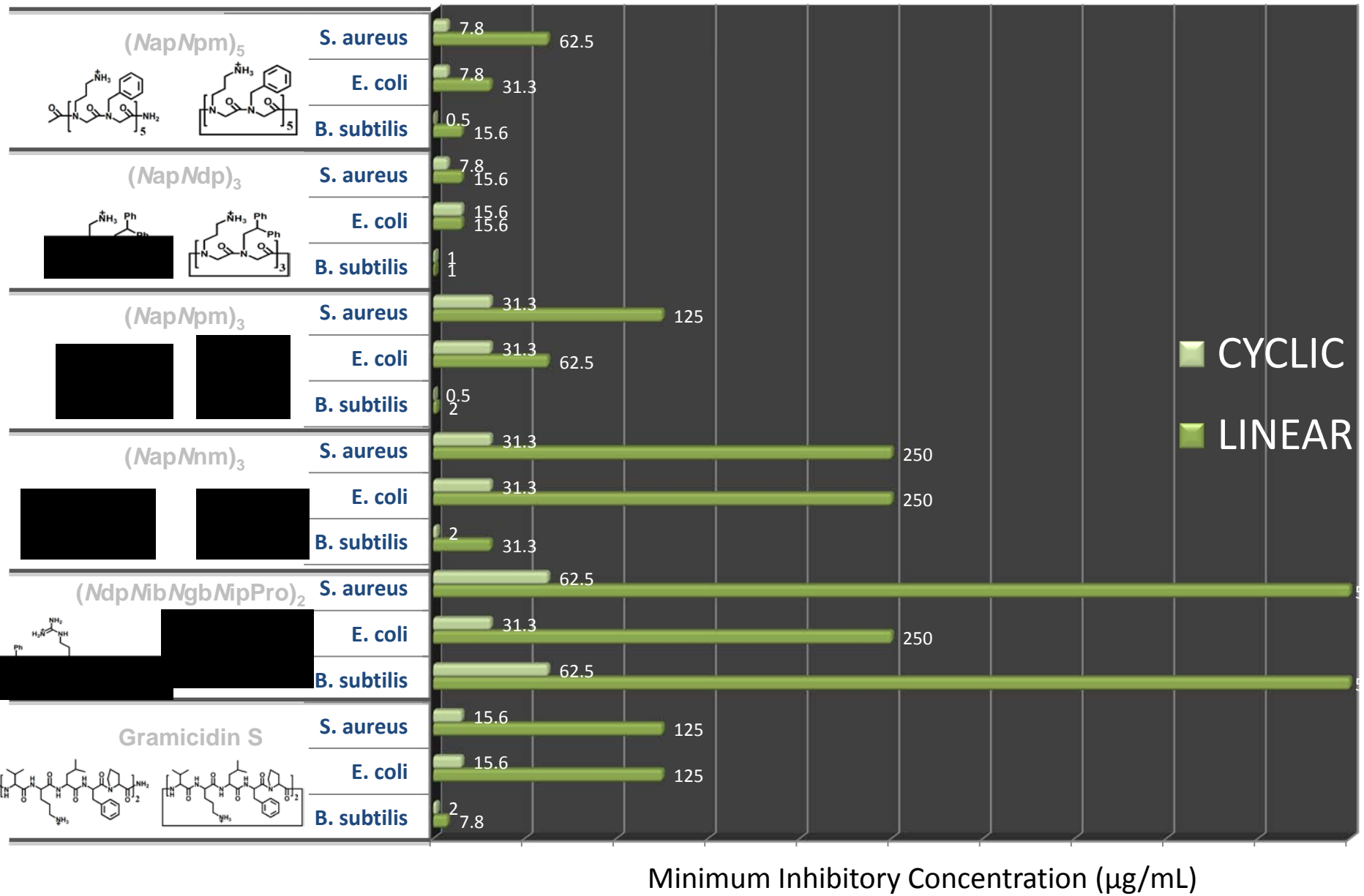
Peptoids: examples

Peptoid cyclo-hexamers as broad spectrum antibiotics





Minimum Inhibitory Concentration (µg/mL)

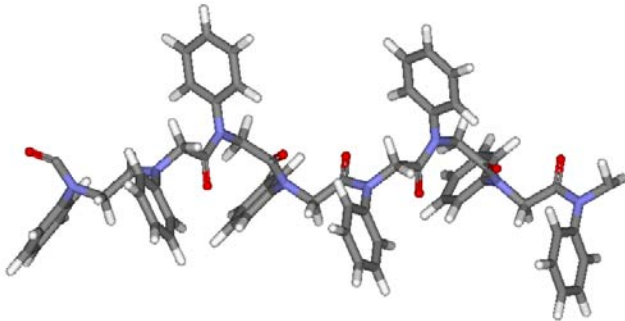
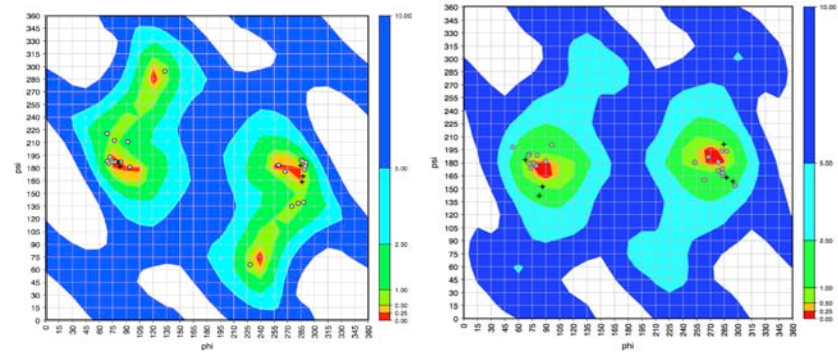


Minimum Inhibitory Concentration (µg/mL)

Conclusions

Peptoid backbones are well predicted by theoretical models

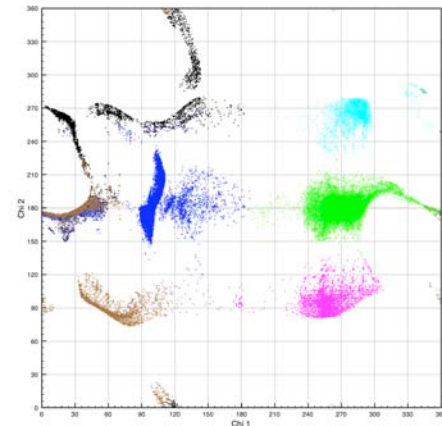
— likely a good platform for design



We are beginning to understand preferences of various peptoid residue types

— building blocks for rational design

We are developing tools to model peptoids in Rosetta



Rich Bonneau

Doug Renfrew

Kent

Kirshenbaum

Mia Huang

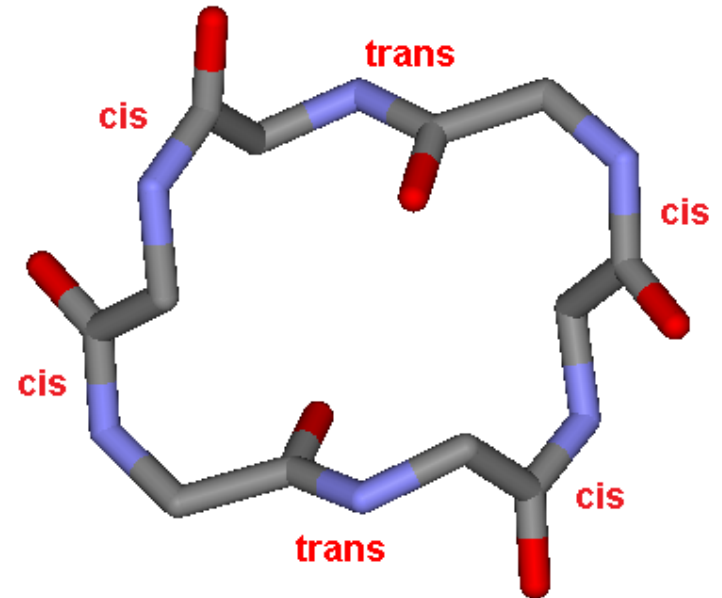
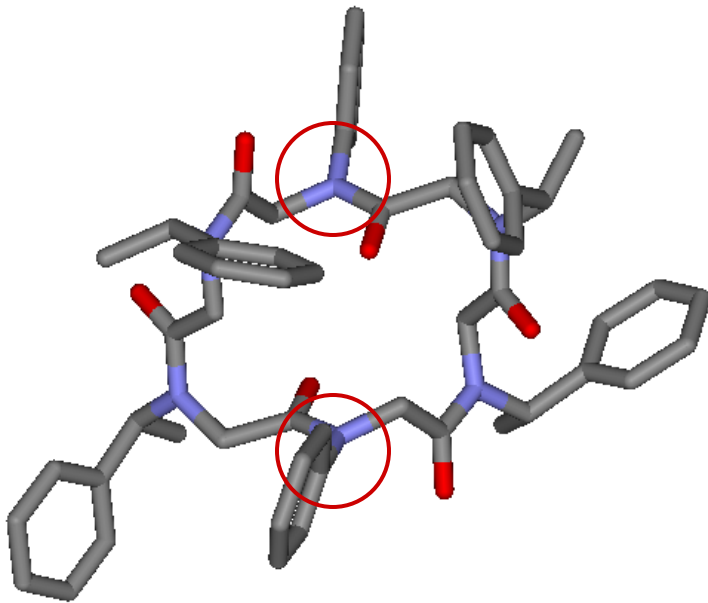
Neel Shah

Peptoids: *N*-aryl side chains

Cyclic Scaffold Bearing *N*-aryl Side Chains

N-aryl at residues at i and $i+3$:

crystal structure shows a predicted structure

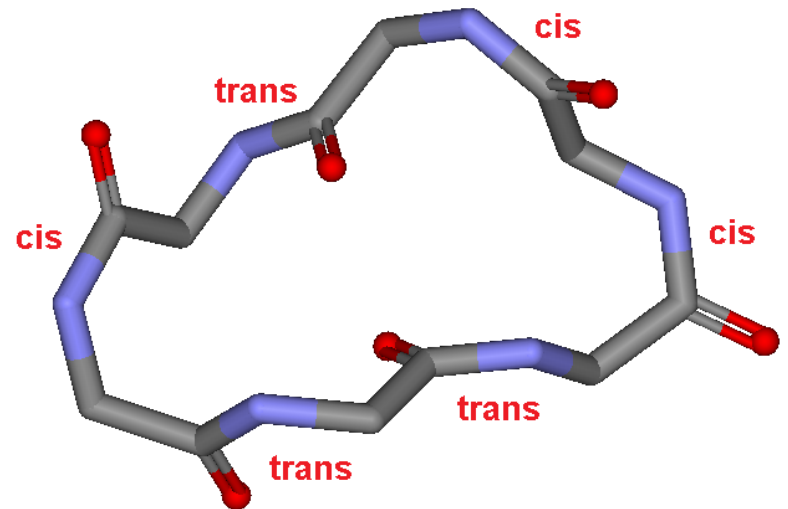
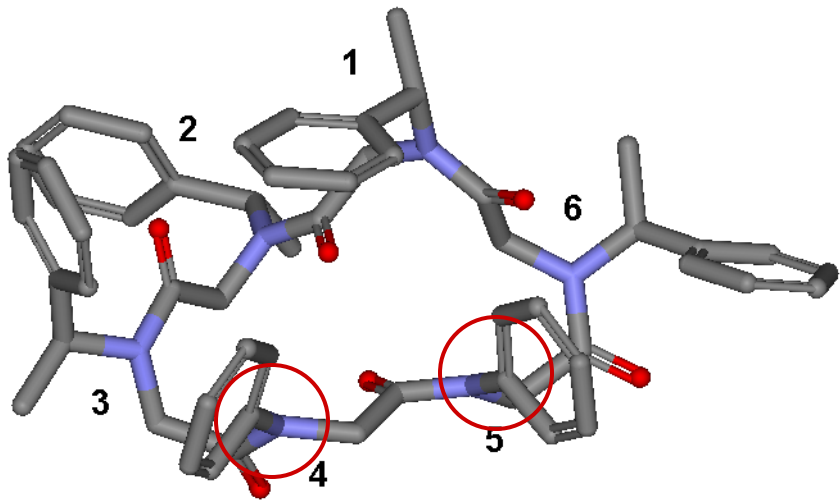


Peptoids: *N*-aryl side chains

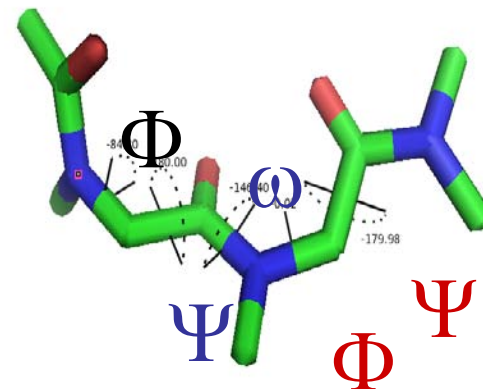
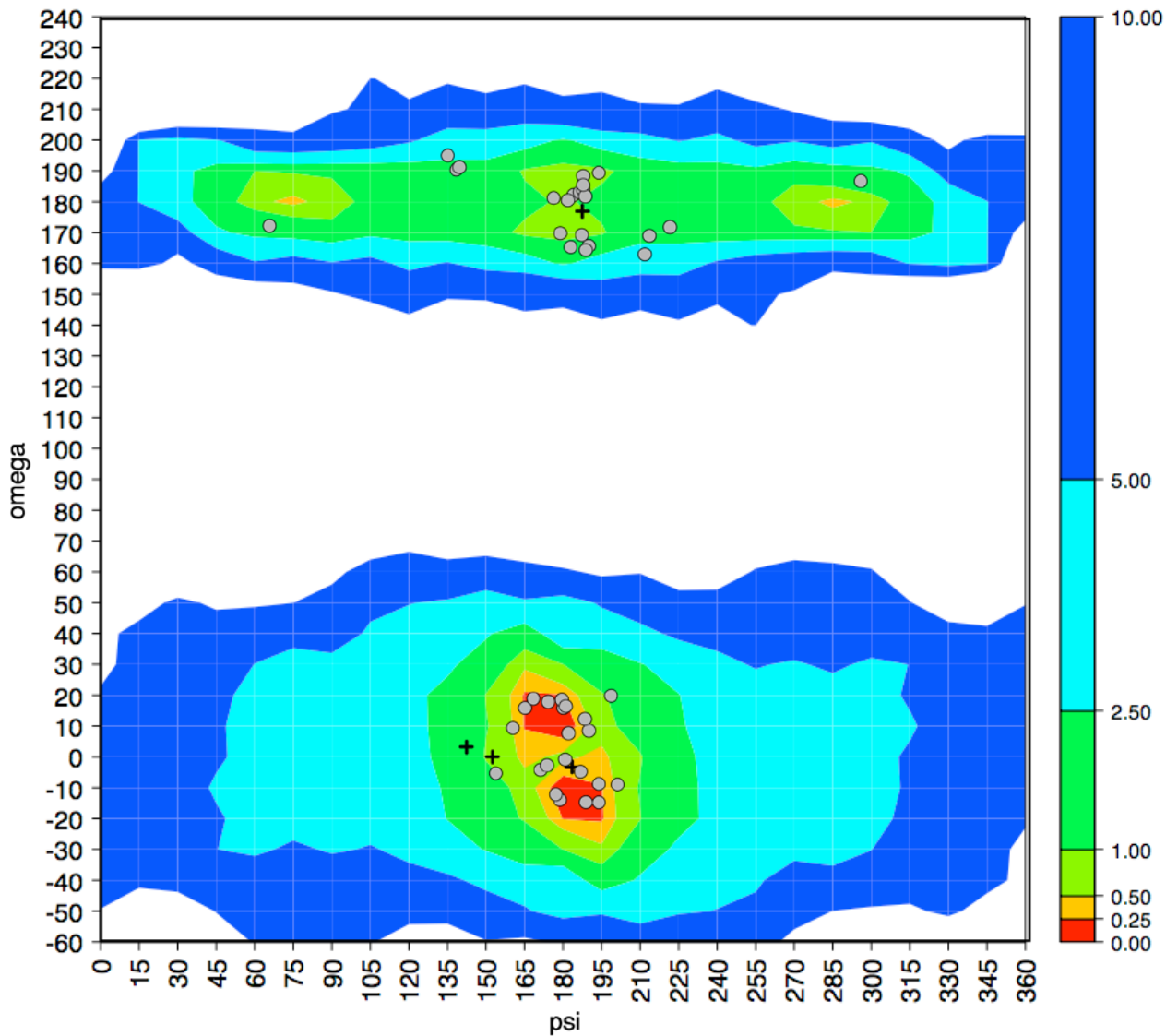
Cyclic Scaffold Bearing *N*-aryl Side Chains

N-aryl at residues at i and $i+1$:

model structure based on HSQC, COSY, and NOE:



Peptoids: psi vs omega



Peptoids: phi vs omega

